



WE ROCK!!

Advanced Geologic Exploration, Inc Scientists of the Earth

60 Acres

Kona Gold

Price: \$4,000

BLM AMC #Pending

- 2wd access after snow melts (April-May).
- Short walk to creek.
- Local gravels on bedrock.
- Abundant, thick older gravel deposits.
- Tree roots & grass clumps, downed trees, logs, etc.
- Medium to shallow water.
- Mining level: Recreational to intermediate.
- Trommel wash plant opportunities!
- Quiet and safe area; very beautiful.
- Children and senior friendly - fun for all!
- Nearest town is Meadow Valley. Small general store.
- Quincy is 9 miles. Food, lodging and gasoline facilities available!

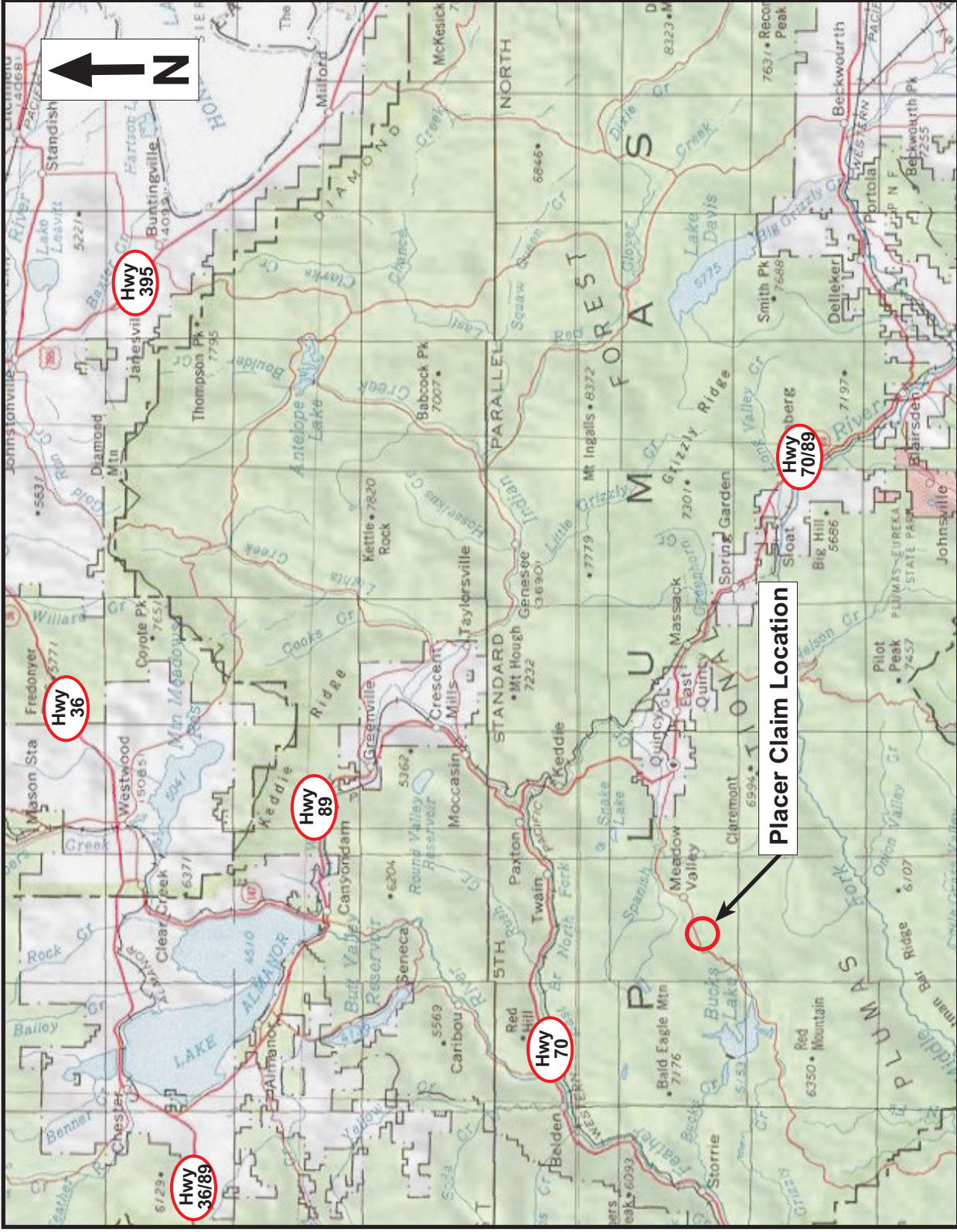


The Location Notice for the **Kona Gold**, placer mining claim has been recorded at the Plumas County Recorder's Office (see registered number above) and the Bureau of Land Management federal mining claim number is pending. It is a non-patented federal mining claim. Fees are current and you will need to file appropriate paperwork to hold the property every year thereafter. Annual tax assessment on the property is approximately \$1.12/acre.



Advanced Geologic is a professional geologic consulting firm located in Chester, California. We not only sell quality mining claims, but we also help people work their claims. Our experience in resource evaluations, compliance and permitting and claim portfolio management allows our clients and buyers to go for the **GOLD**.

PO Box 1956 Chester CA 96020
Tel: (530) 258-4228 Fax: (530) 258-4339
advancedgeologic.com

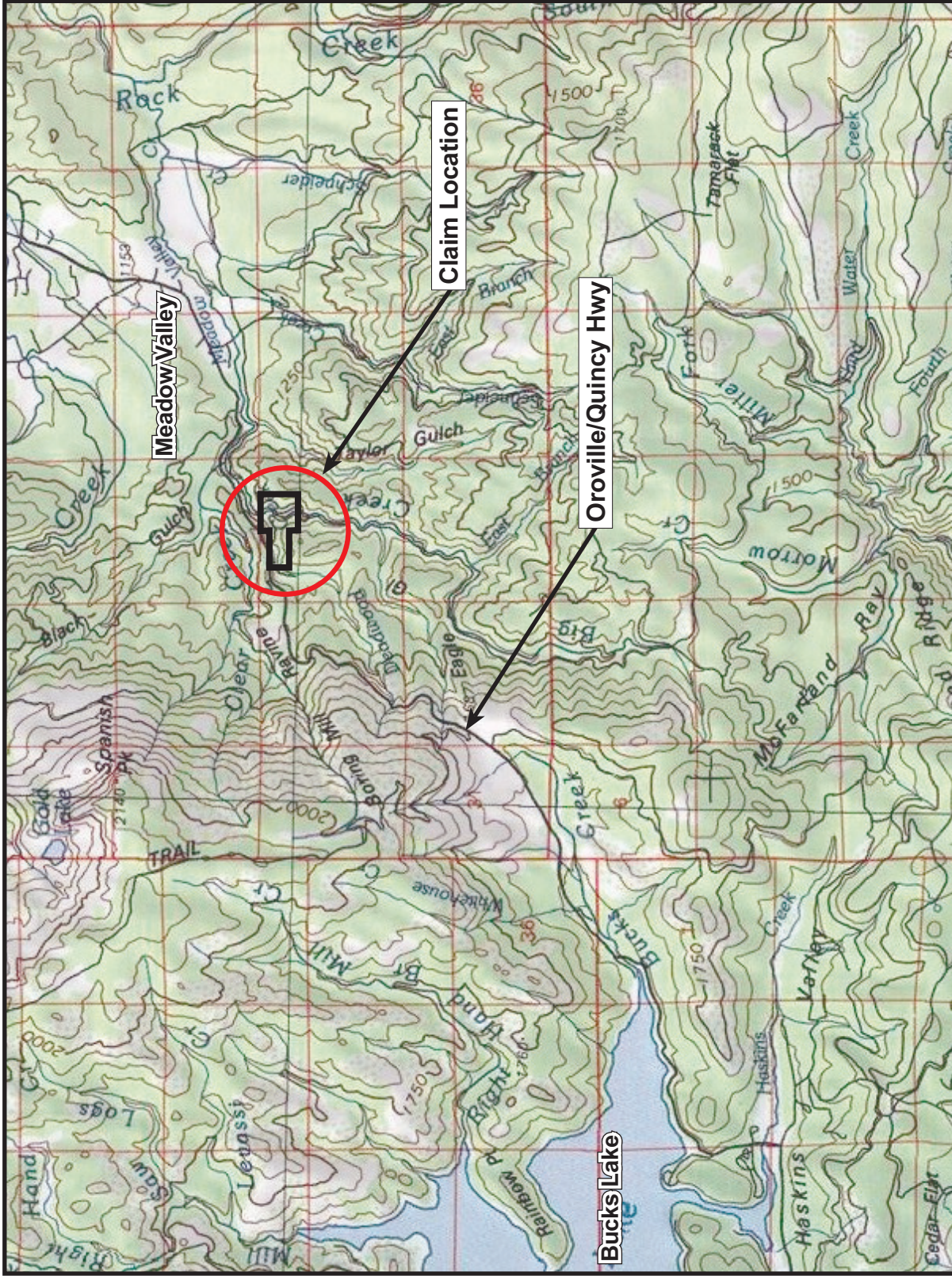


Advanced Geologic Exploration, Inc.
 Scientists of the Earth™
 P.O. Box 1956 • Chester • California • 96020
 Tel: (530) 258-4228 • Fax: (530) 258-4339

Kona Gold Placer Mining Claim

Placer Claim Regional Map

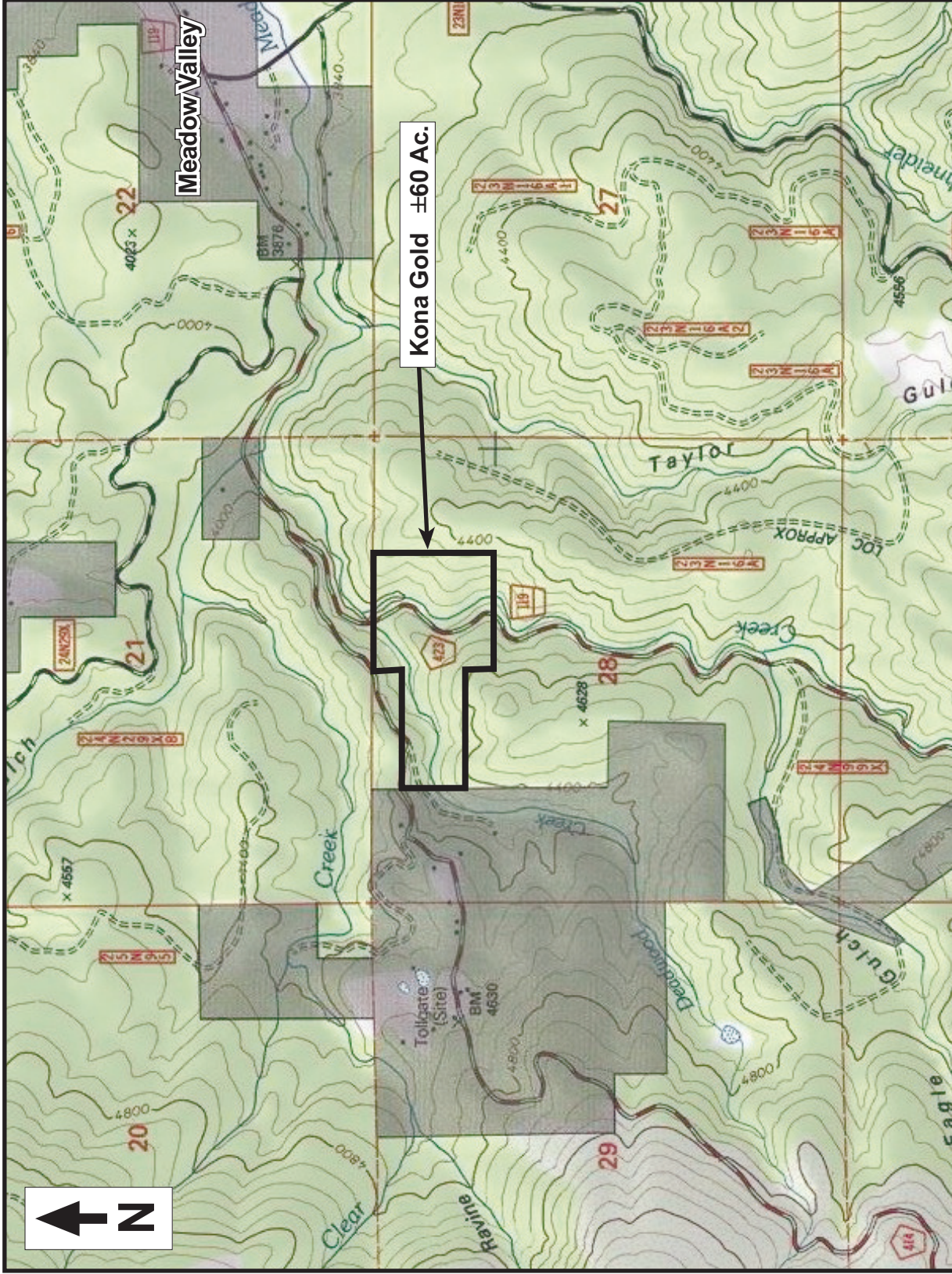
1 Claim Block, ±60 Ac.	T. 24N, R. 8E, S. 28
Plumas County, CA	Big Creek, Deadwood Creek




Advanced Geologic Exploration, Inc.
 Scientists of the Earth™
 P.O. Box 1956 • Chester • California • 96020
 Tel: (530) 258-4228 • Fax: (530) 258-4339

Kona Gold Placer Mining Claim

Placer Claim Vicinity Map	
1 Claim Block, ±60 Ac.	T. 24N, R. 8E, S. 28
Plumas County, CA	Big Creek, Deadwood Creek

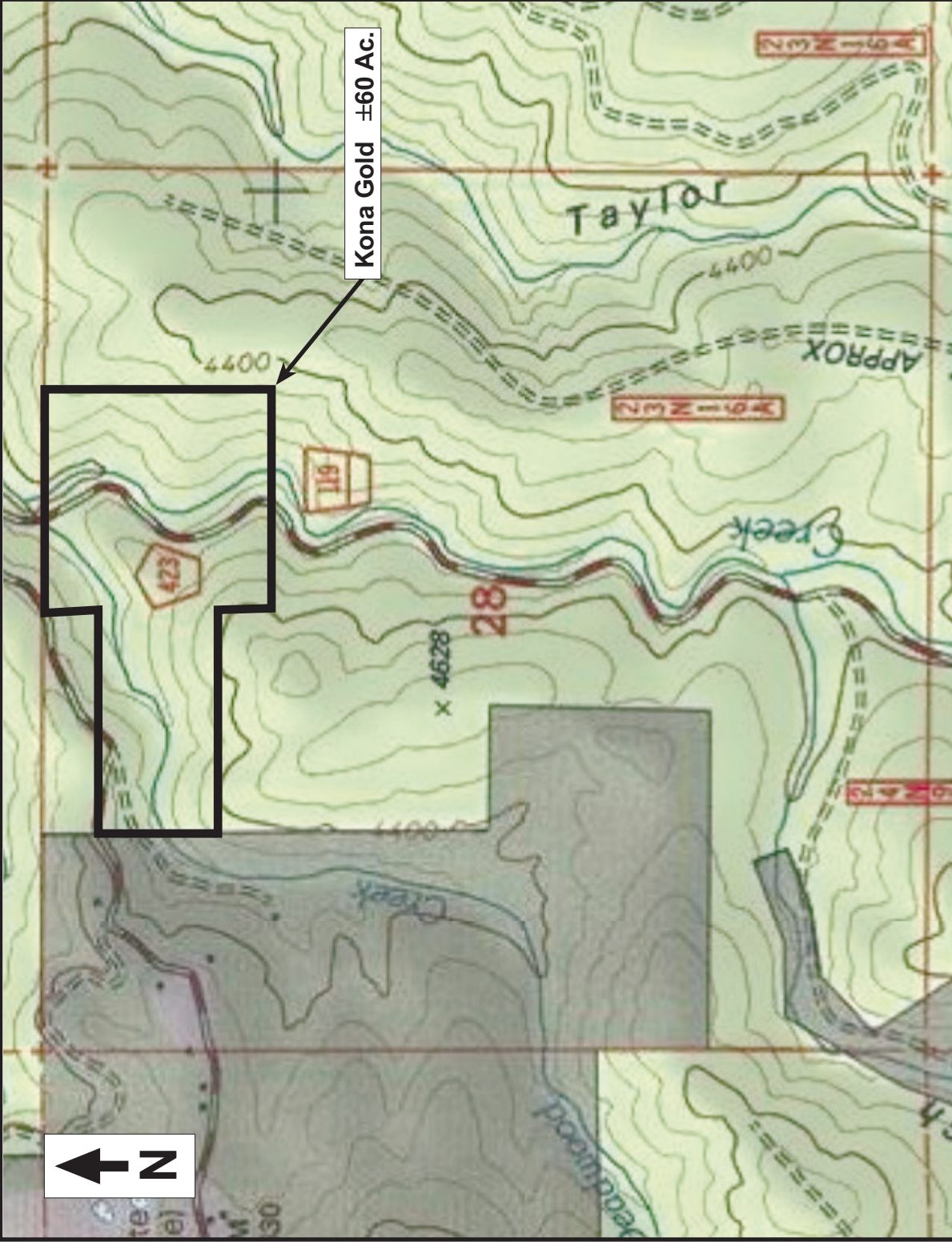


Advanced Geologic Exploration, Inc.
 Scientists of the Earth™
 P.O. Box 1956 • Chester • California • 96020
 Tel: (530) 258-4228 • Fax: (530) 258-4339

**Kona Gold
 Placer Mining Claim**

Placer Claim Location Map

1 Claim Block, ±60 Ac. T. 24N, R. 8E, S. 28
 Plumas County, CA Big Creek,
 Deadwood Creek



Advanced Geologic Exploration, Inc.
Scientists of the Earth™
 P.O. Box 1956 • Chester • California • 96020
 Tel: (530) 258-4228 • Fax: (530) 258-4339

Kona Gold Placer Mining Claim

Placer Claim Detail Map	
1 Claim Block, ±60 Ac.	T. 24N, R. 8E, S. 28
Plumas County, CA	
Big Creek, Deadwood Creek	

Claim Georeferences - Kona Gold

NW 1/4, NE 1/4	Sec. 28	T. 24 N	R. 8 E	MDM
S 1/2, N 1/2, NE 1/4, NW 1/4	Sec. 28	T. 24 N	R. 8 E	MDM
N 1/2, S 1/2, NE 1/4, NW 1/4	Sec. 28	T. 24 N	R. 8 E	MDM

Estimated GPS Coordinates

Northeast Corner Boundary:	39.92045°N	121.08784°W	4200ft
Bucks Lake Road @ Northwest Corner Boundary:	39.92045°N	121.08784°W	4206ft
Deadwood Creek @ Western Boundary:	39.91855°N	121.09705°W	4203ft
Big Creek Road @ Southern Boundary:	39.91703°N	121.09006°W	4107ft
Southeast Corner Boundary:	39.91684°N	121.08771°W	4328ft

****You must set GPS to the following settings: Datum equals NAD27 Units equals UTM****

Driving Directions – Deadwood Creek

Kona Gold

Start – Quincy, CA

1. Head West on Main Street toward Meadow Valley Road – ½ mile
2. Continue onto Bucks Lake Road – 9 miles
3. Continue onto Big Creek Road

Road enters Northern claim boundary @ 39.92045 N & 121.09032 W

Use GPS coordinates to locate claim boundaries.