



WE ROCK!!

Advanced Geologic Exploration, Inc Scientists of the Earth

80 Acres

Bighorn Run

Price:\$7,000

BLM AMC #00000
Plumas County Records #2013-0007010

The streams and surface placers were first worked during the gold rush. For a time the locality was known as Rich Gulch and Spanishtown. In those days much gold was recovered from the North Fork of the Feather River, and a diversion tunnel was driven through Big Bend. Numerous Chinese miners reworked the old placer tailings later on. Lode mining began in the 1850s, and there was much activity during the 1890s and early 1900s. The Surcease mine was worked on a major scale from 1933 to 1942, and copper was mined at the nearby Big Bend mine during World War II. The estimated output of the district is slightly more than 100,000 ounces of gold.

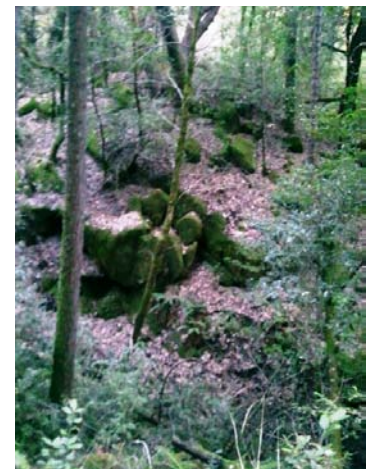


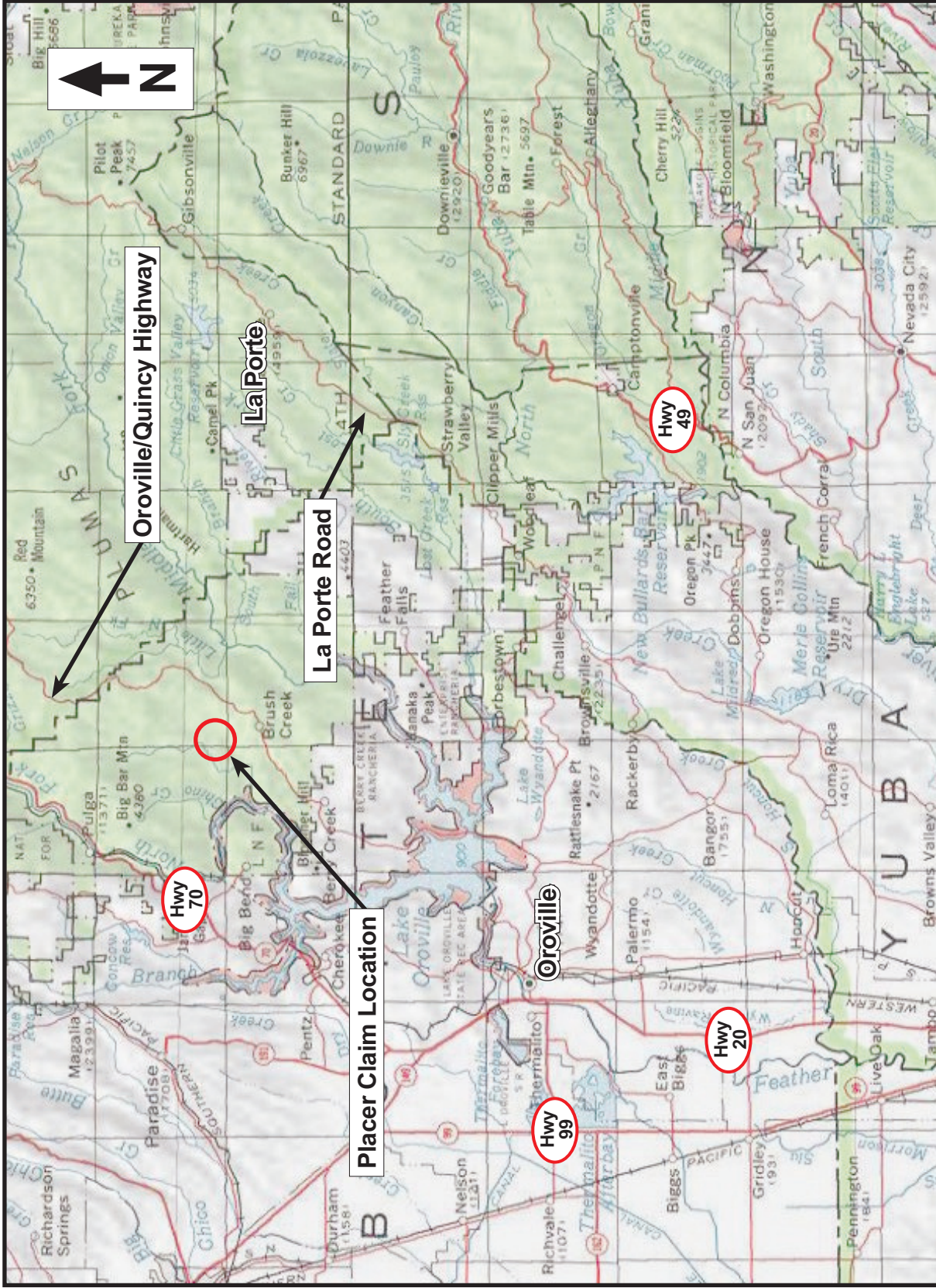
The Location Notice for the **Sparkling Soda**, placer mining claim has been recorded at the Plumas County Recorder's Office (see registered number above) and the Bureau of Land Management federal mining claim number is pending. It is a non-patented federal mining claim. Fees are current for 2013 and you will need to file appropriate paperwork to hold the property every year thereafter. Annual tax assessment on the property is approximately \$1.12/acre.



Advanced Geologic is a professional geologic consulting firm located in Chester, California. We not only sell quality mining claims, but we also help people work their claims. Our experience in resource evaluations, compliance and permitting and claim portfolio management allows our clients and buyers to go for the **GOLD**.

PO Box 1956 Chester CA 96020
Tel: (530) 258-4228 Fax: (530) 258-4339



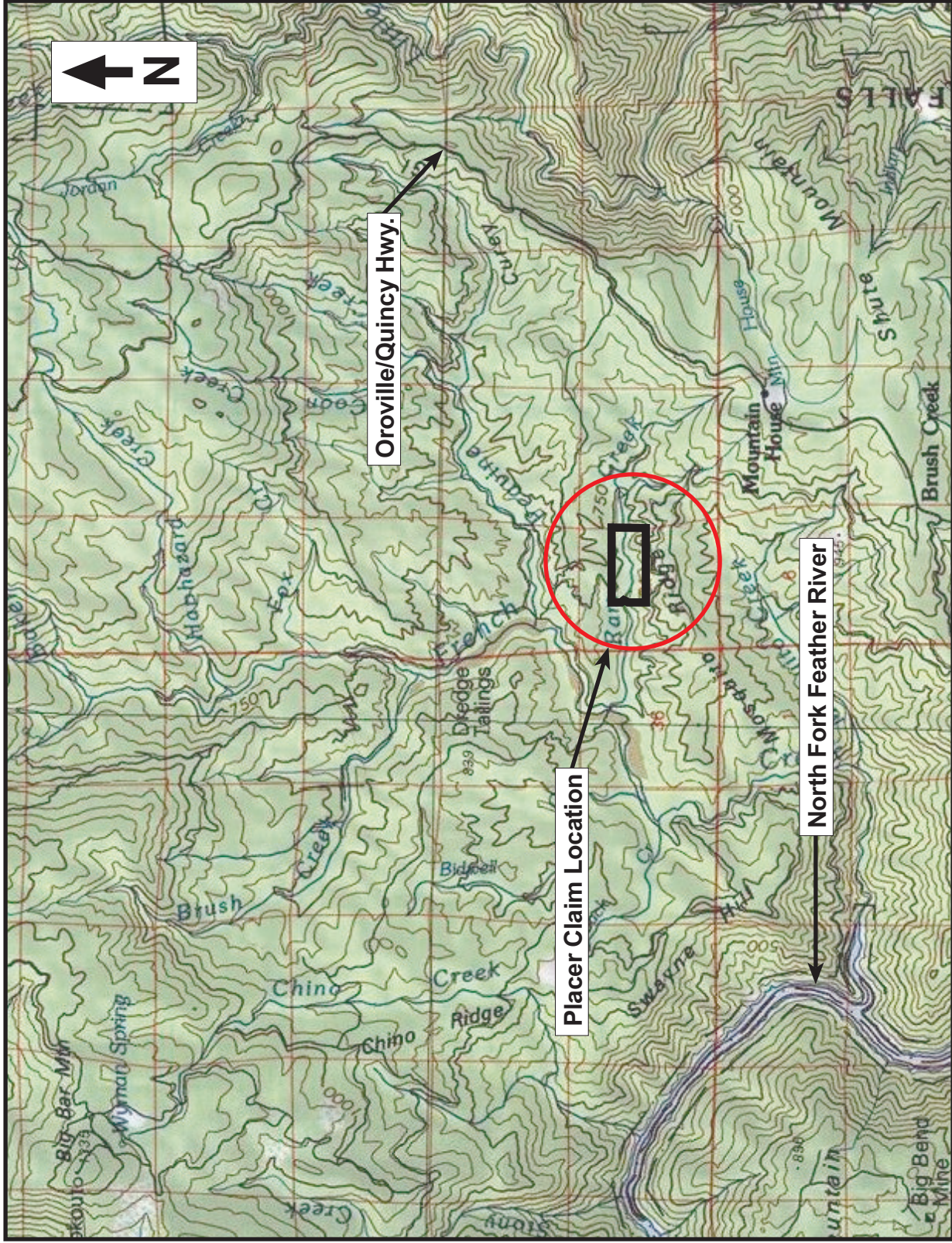


Advanced Geologic Exploration, Inc.
 Scientists of the Earth™
 P.O. Box 1956 • Chester • California • 96020
 Tel: (530) 258-4228 • Fax: (530) 258-4339

Bighorn Run Placer Mining Claim

Placer Claim Regional Map

1 Claim Block, 80 Acres	T.22N, R.6E, S.31 M.D.M.
Butte County, CA	Ram Creek

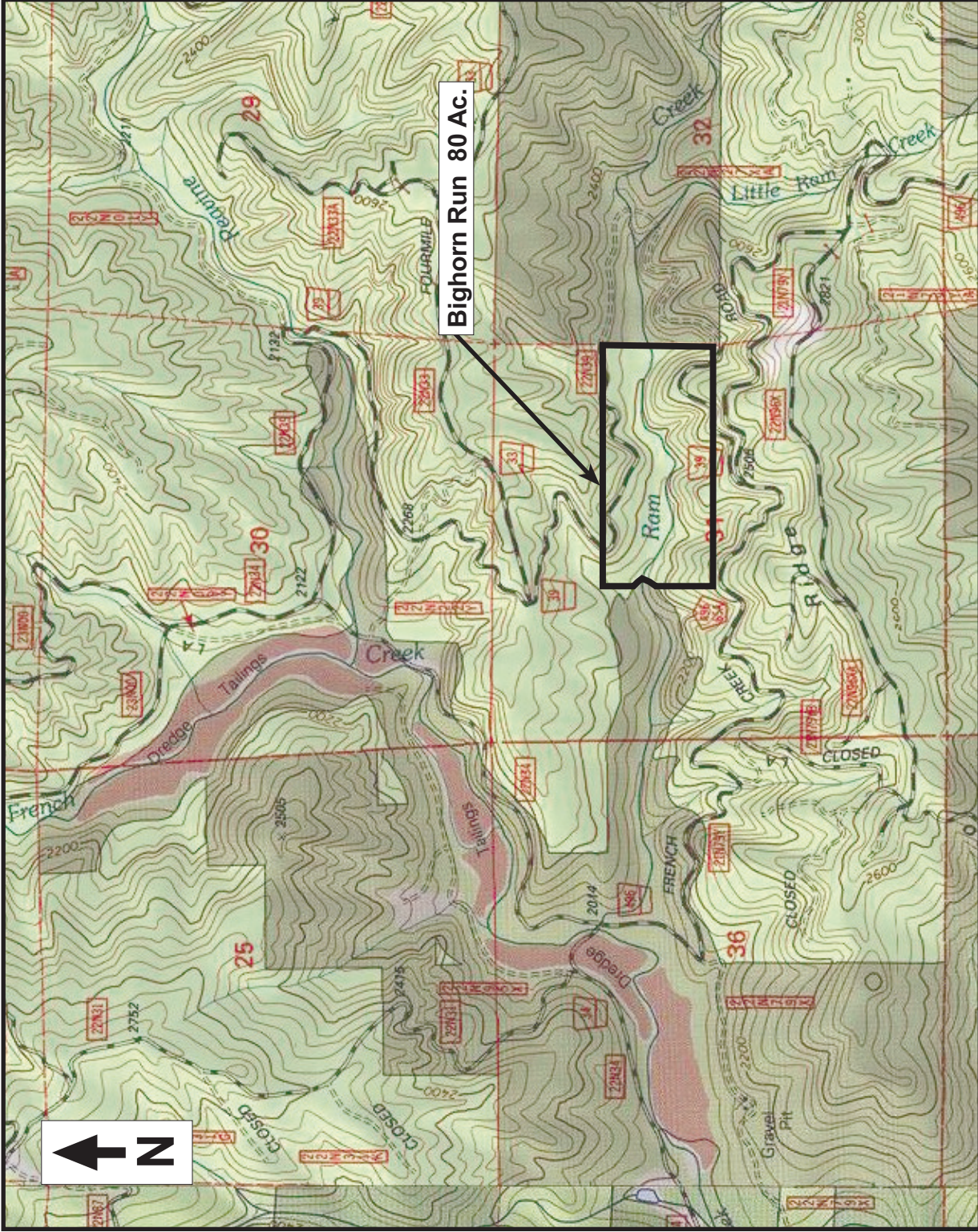


Advanced Geologic Exploration, Inc.
 Scientists of the Earth™
 P.O. Box 1956 • Chester • California • 96020
 Tel: (530) 258-4228 • Fax: (530) 258-4339

Bighorn Run Placer Mining Claim

Placer Claim Vicinity Map

1 Claim Block, 80 Acres	T.22N, R.6E, S.31 M.D.M.
Butte County, CA	Ram Creek



Bighorn Run 80 Ac.

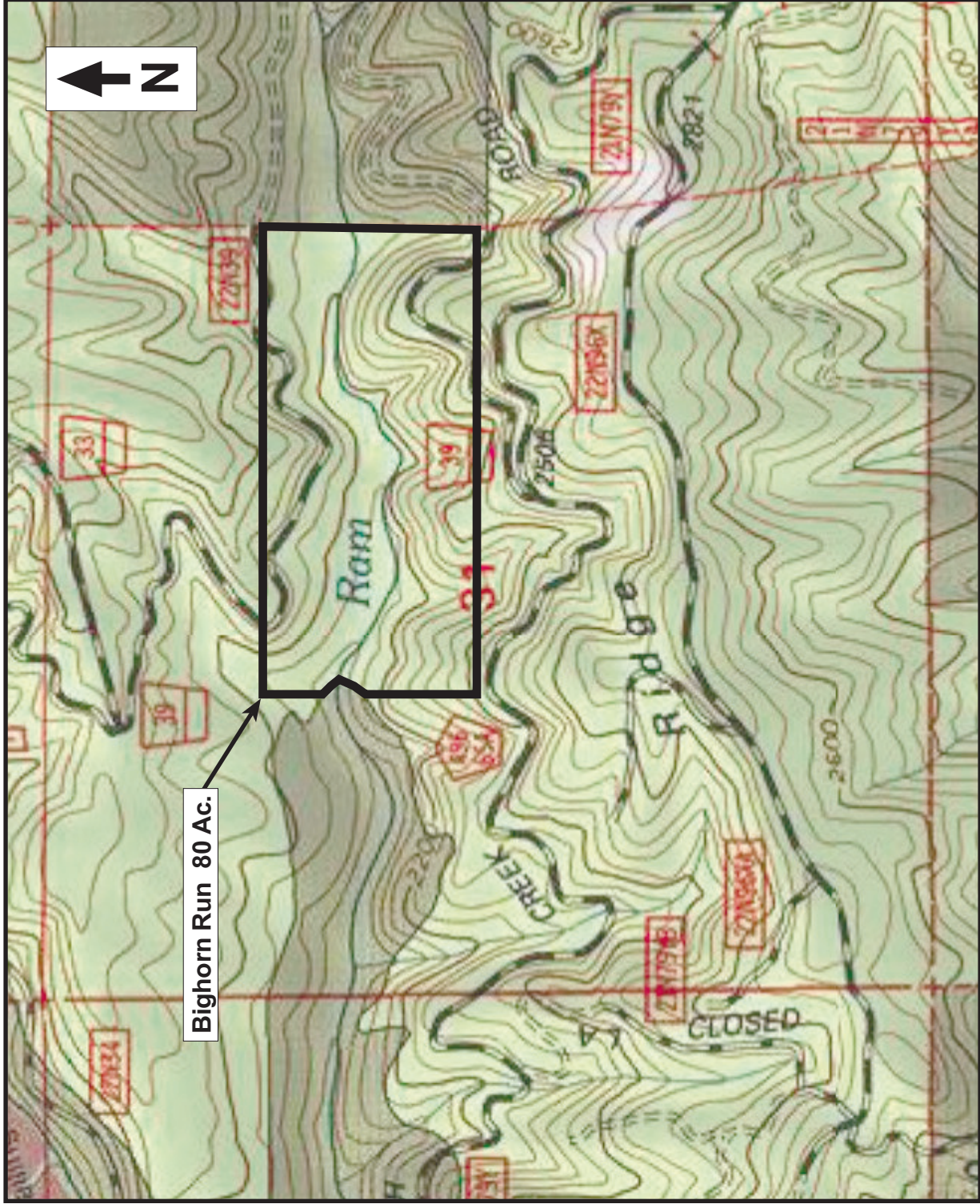


Advanced Geologic Exploration, Inc.
 Scientists of the Earth™
 P.O. Box 1956 • Chester • California • 96020
 Tel: (530) 258-4228 • Fax: (530) 258-4339

Bighorn Run Placer Mining Claim

Placer Claim Location Map

1 Claim Block, 80 Acres	T.22N, R.6E, S.31 M.D.M.
Butte County, CA	Ram Creek



Bighorn Run 80 Ac.



Advanced Geologic Exploration, Inc.
 Scientists of the Earth™
 P.O. Box 1956 • Chester • California • 96020
 Tel: (530) 258-4228 • Fax: (530) 258-4339

Bighorn Run Placer Mining Claim

Placer Claim Detail Map

1 Claim Block, 80 Acres	T.22N, R.6E, S.31 M.D.M.
Butte County, CA	Ram Creek

Claim Georeferences - Bighorn Run

S 1/2, NE 1/4	Sec. 31	T. 22 N	R. 6 E	MDM
E 1/2, SE 1/4, NW 1/4	Sec. 31	T. 22 N	R. 6 E	MDM

Estimated GPS Coordinates

USF Road 22N39 @ Northeast Corner Boundary:
39.72219°N 121.34033°W 2297ft

Ram Creek @ Central Western Claim Boundary:
39.72077°N 121.34997°W 2118ft

USF Road 21N79Y @ Southwest Corner Boundary:
39.71855°N 121.35025°W 2419ft

USF Road 21N79Y @ Southeast Corner Boundary:
39.71847°N 121.34036°W 2375ft

****You must set GPS to the following settings: Datum equals NAD27 Units equals UTM****

Driving Directions – Ram Creek

Bighorn Run

Start – Oroville, CA

1. Head Southeast on CA-162/Olive Hwy toward Fay Way – 13.5 miles
2. Continue on Oroville-Quincy Hwy – 9 miles
3. Turn left onto Big Ridge Rd & continue onto French Creek Rd – 5 miles
4. Take a sharp right onto USF Rd 22N39 – 1 mile

USF Rd enters Northeast Corner Boundary

Use GPS coordinates to locate claim boundaries.