

BLUE LEAD GOLD MINE

PROPOSED MINING PHASE MAPS

18272 RED DOG ROAD
RED DOG MINING DISTRICT
NEVADA COUNTY, CA

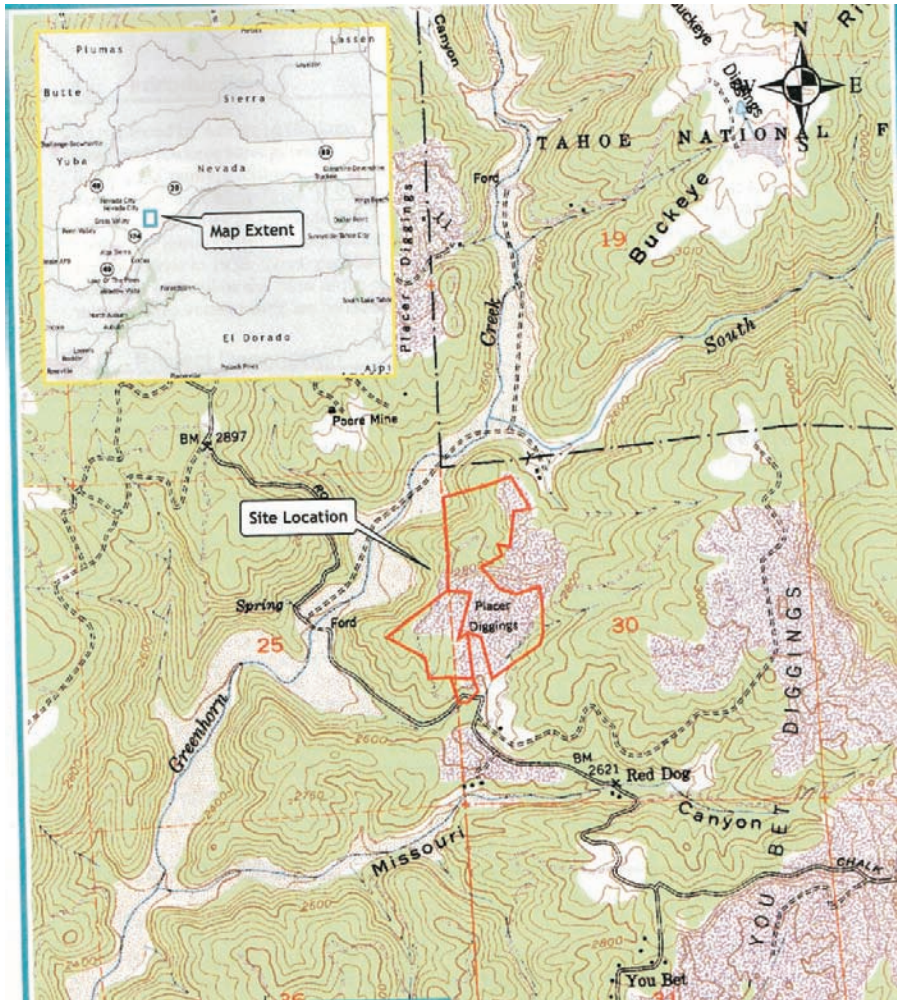


ROBERT WHITE, PRESIDENT
BLUE LEAD GOLD MINE LLC
4355 QUAIL RUN LANE
DANVILLE, CA 94506

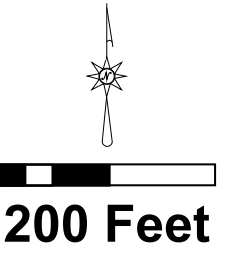
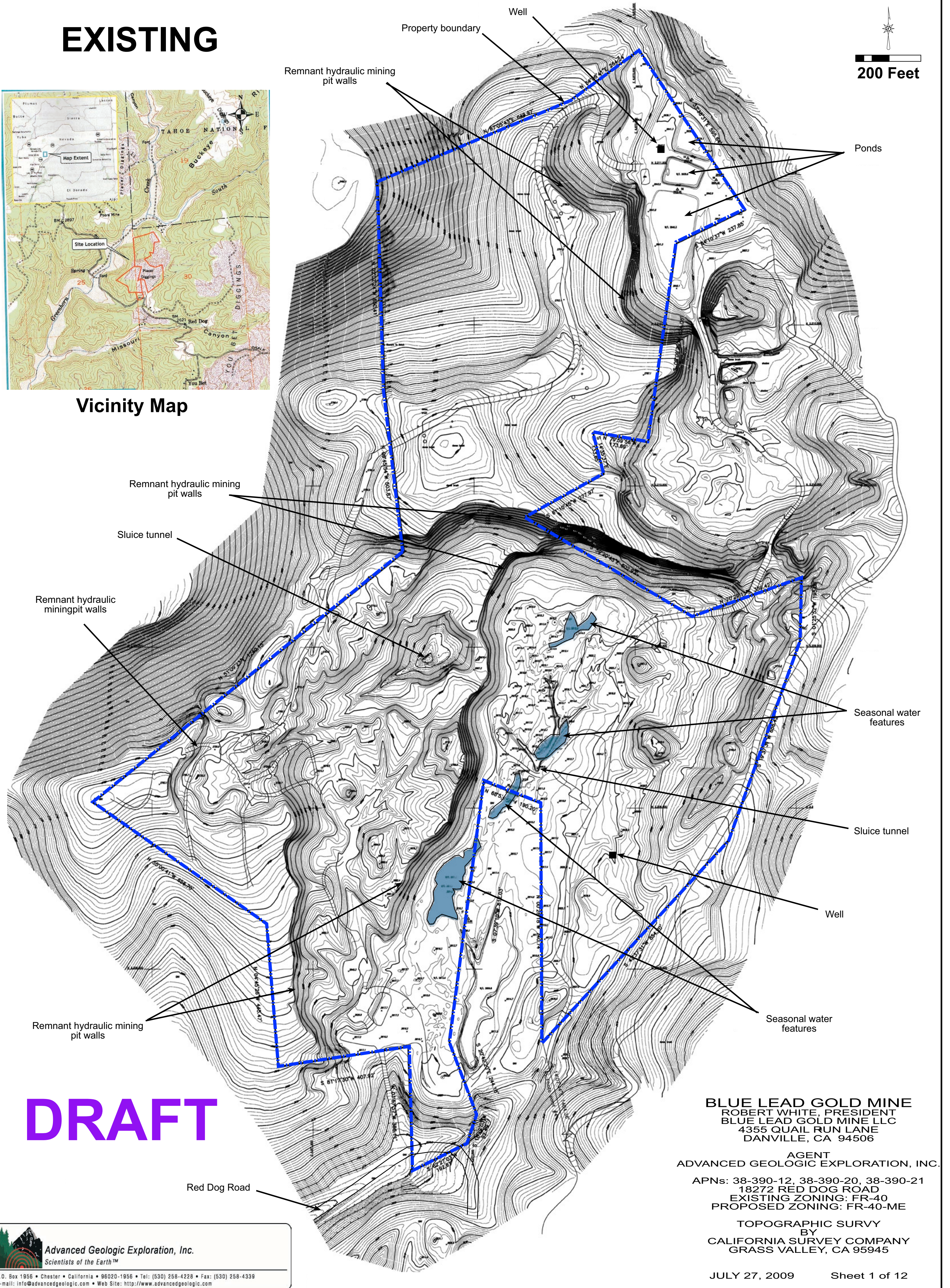
PREPARED BY:
ADVANCED GEOLOGIC EXPLORATION, INC.
P.O. BOX 1956
CHESTER, CA 96020
(530) 258-4228

April 11, 2009

EXISTING



Vicinity Map



DRAFT

BLUE LEAD GOLD MINE
ROBERT WHITE, PRESIDENT
BLUE LEAD GOLD MINE LLC
4355 QUAIL RUN LANE
DANVILLE, CA 94506

AGENT
ADVANCED GEOLOGIC EXPLORATION, INC.

APNs: 38-390-12, 38-390-20, 38-390-21
18272 RED DOG ROAD
EXISTING ZONING: FR-40
PROPOSED ZONING: FR-40-ME

TOPOGRAPHIC SURVEY
BY
CALIFORNIA SURVEY COMPANY
GRASS VALLEY, CA 95945

JULY 27, 2009

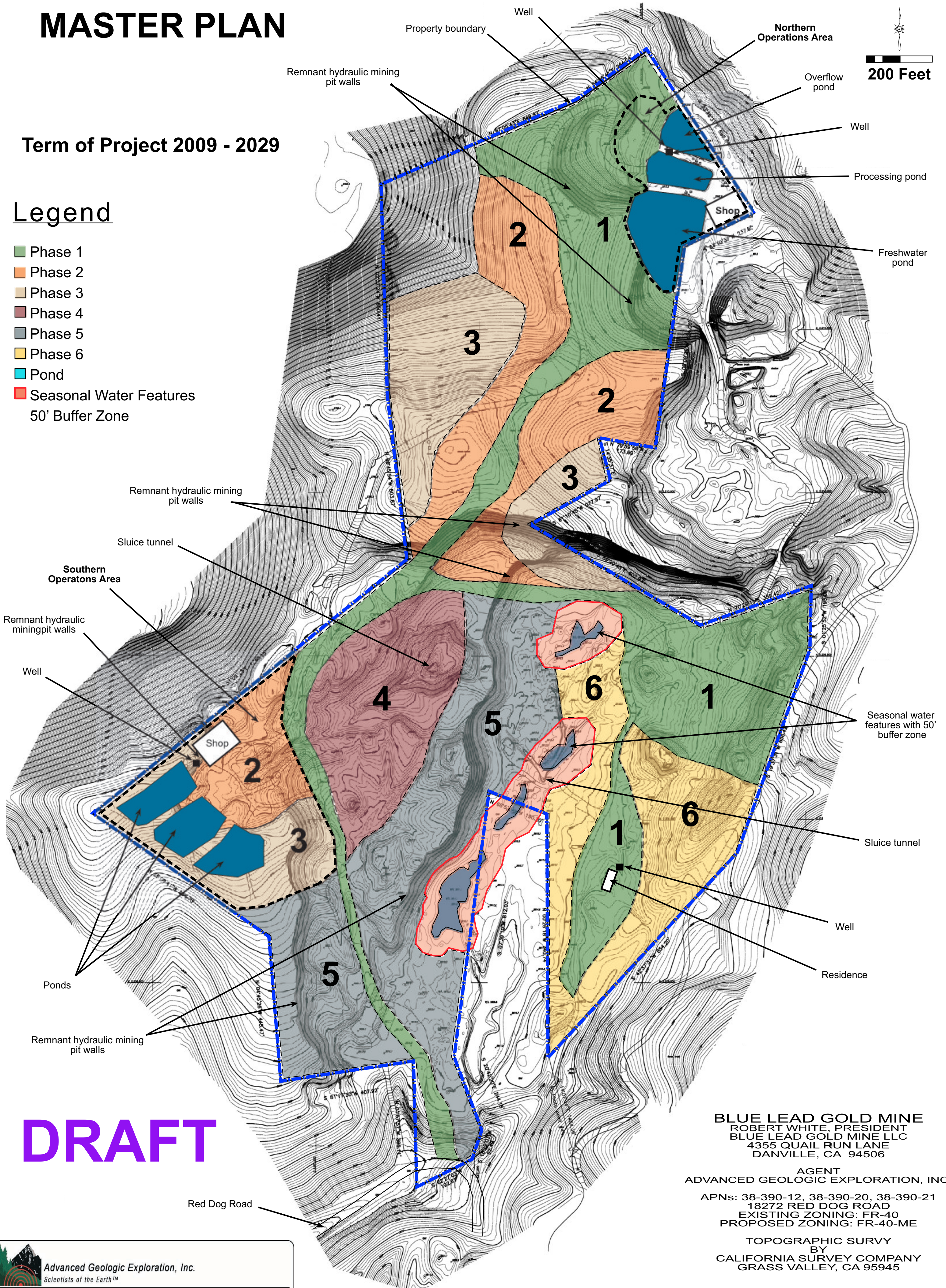
Sheet 1 of 12

MASTER PLAN

Term of Project 2009 - 2029

Legend

- Phase 1
- Phase 2
- Phase 3
- Phase 4
- Phase 5
- Phase 6
- Pond
- Seasonal Water Features
50' Buffer Zone



DRAFT

BLUE LEAD GOLD MINE
 ROBERT WHITE, PRESIDENT
 BLUE LEAD GOLD MINE LLC
 4355 QUAIL RUN LANE
 DANVILLE, CA 94506

AGENT
 ADVANCED GEOLOGIC EXPLORATION, INC.

APNs: 38-390-12, 38-390-20, 38-390-21
 18272 RED DOG ROAD
 EXISTING ZONING: FR-40
 PROPOSED ZONING: FR-40-ME

TOPOGRAPHIC SURVEY
 BY
 CALIFORNIA SURVEY COMPANY
 GRASS VALLEY, CA 95945

JULY 27, 2009

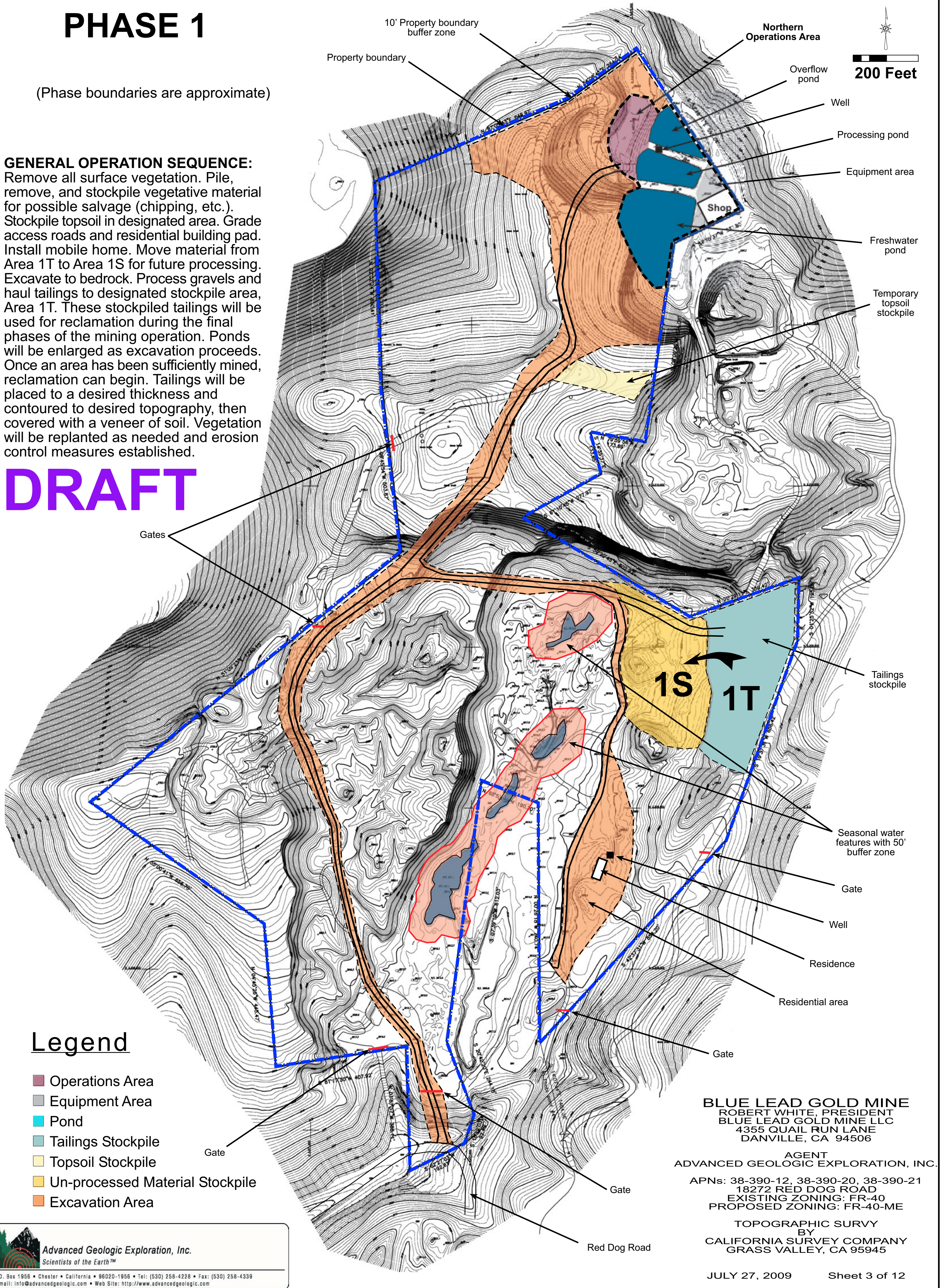
Sheet 2 of 12

PHASE 1

(Phase boundaries are approximate)

GENERAL OPERATION SEQUENCE:
 Remove all surface vegetation. Pile, remove, and stockpile vegetative material for possible salvage (chipping, etc.). Stockpile topsoil in designated area. Grade access roads and residential building pad. Install mobile home. Move material from Area 1T to Area 1S for future processing. Excavate to bedrock. Process gravels and haul tailings to designated stockpile area, Area 1T. These stockpiled tailings will be used for reclamation during the final phases of the mining operation. Ponds will be enlarged as excavation proceeds. Once an area has been sufficiently mined, reclamation can begin. Tailings will be placed to a desired thickness and contoured to desired topography, then covered with a veneer of soil. Vegetation will be replanted as needed and erosion control measures established.

DRAFT



Legend

- Operations Area
- Equipment Area
- Pond
- Tailings Stockpile
- Topsoil Stockpile
- Un-processed Material Stockpile
- Excavation Area

BLUE LEAD GOLD MINE
 ROBERT WHITE, PRESIDENT
 BLUE LEAD GOLD MINE LLC
 4355 QUAIL RUN LANE
 DANVILLE, CA 94506

AGENT
 ADVANCED GEOLOGIC EXPLORATION, INC.

APNs: 38-390-12, 38-390-20, 38-390-21
 18272 RED DOG ROAD
 EXISTING ZONING: FR-40
 PROPOSED ZONING: FR-40-ME

TOPOGRAPHIC SURVEY
 BY
 CALIFORNIA SURVEY COMPANY
 GRASS VALLEY, CA 95945

JULY 27, 2009

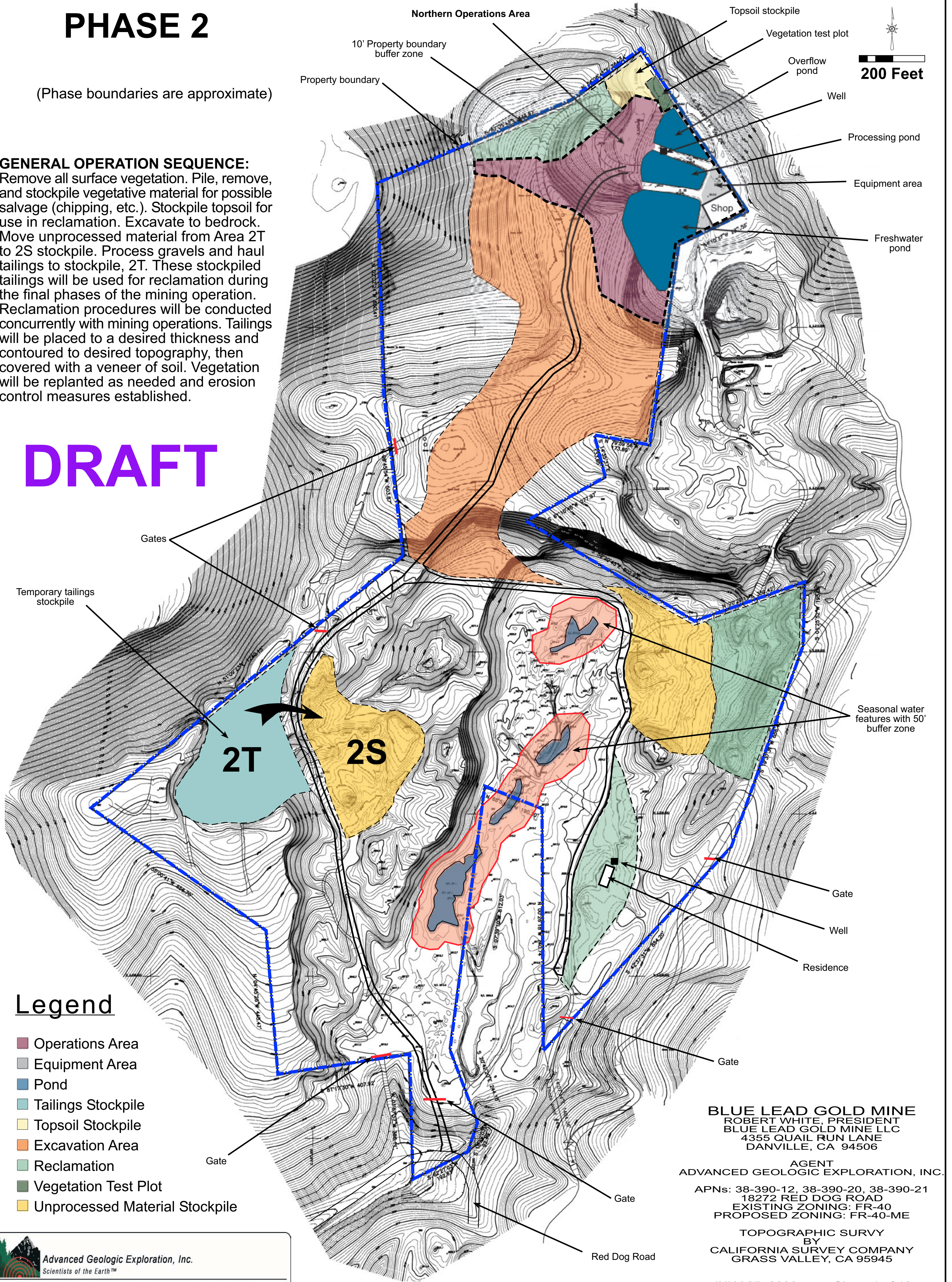
Sheet 3 of 12

PHASE 2

(Phase boundaries are approximate)

GENERAL OPERATION SEQUENCE:
 Remove all surface vegetation. Pile, remove, and stockpile vegetative material for possible salvage (chipping, etc.). Stockpile topsoil for use in reclamation. Excavate to bedrock. Move unprocessed material from Area 2T to 2S stockpile. Process gravels and haul tailings to stockpile, 2T. These stockpiled tailings will be used for reclamation during the final phases of the mining operation. Reclamation procedures will be conducted concurrently with mining operations. Tailings will be placed to a desired thickness and contoured to desired topography, then covered with a veneer of soil. Vegetation will be replanted as needed and erosion control measures established.

DRAFT



Legend

- Operations Area
- Equipment Area
- Pond
- Tailings Stockpile
- Topsoil Stockpile
- Excavation Area
- Reclamation
- Vegetation Test Plot
- Unprocessed Material Stockpile

BLUE LEAD GOLD MINE
 ROBERT WHITE, PRESIDENT
 BLUE LEAD GOLD MINE LLC
 4355 QUAIL RUN LANE
 DANVILLE, CA 94506

AGENT
 ADVANCED GEOLOGIC EXPLORATION, INC.

APNs: 38-390-12, 38-390-20, 38-390-21
 18272 RED DOG ROAD
 EXISTING ZONING: FR-40
 PROPOSED ZONING: FR-40-ME

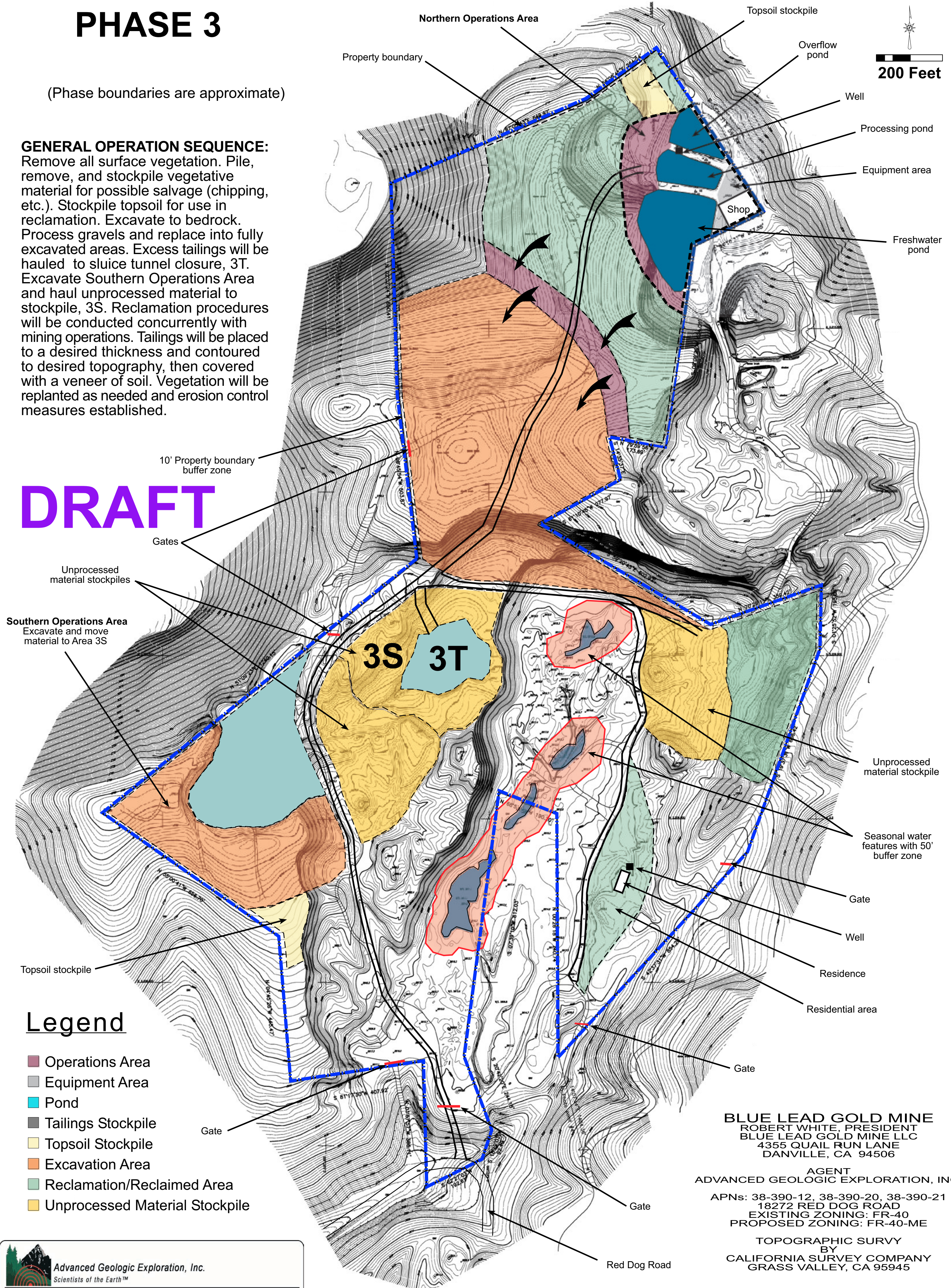
TOPOGRAPHIC SURVEY
 BY
 CALIFORNIA SURVEY COMPANY
 GRASS VALLEY, CA 95945

PHASE 3

(Phase boundaries are approximate)

GENERAL OPERATION SEQUENCE:
 Remove all surface vegetation. Pile, remove, and stockpile vegetative material for possible salvage (chipping, etc.). Stockpile topsoil for use in reclamation. Excavate to bedrock. Process gravels and replace into fully excavated areas. Excess tailings will be hauled to sluice tunnel closure, 3T. Excavate Southern Operations Area and haul unprocessed material to stockpile, 3S. Reclamation procedures will be conducted concurrently with mining operations. Tailings will be placed to a desired thickness and contoured to desired topography, then covered with a veneer of soil. Vegetation will be replanted as needed and erosion control measures established.

DRAFT



Legend

- Operations Area
- Equipment Area
- Pond
- Tailings Stockpile
- Topsoil Stockpile
- Excavation Area
- Reclamation/Reclaimed Area
- Unprocessed Material Stockpile

BLUE LEAD GOLD MINE
 ROBERT WHITE, PRESIDENT
 BLUE LEAD GOLD MINE LLC
 4355 QUAIL RUN LANE
 DANVILLE, CA 94506

AGENT
 ADVANCED GEOLOGIC EXPLORATION, INC.

APNs: 38-390-12, 38-390-20, 38-390-21
 18272 RED DOG ROAD
 EXISTING ZONING: FR-40
 PROPOSED ZONING: FR-40-ME

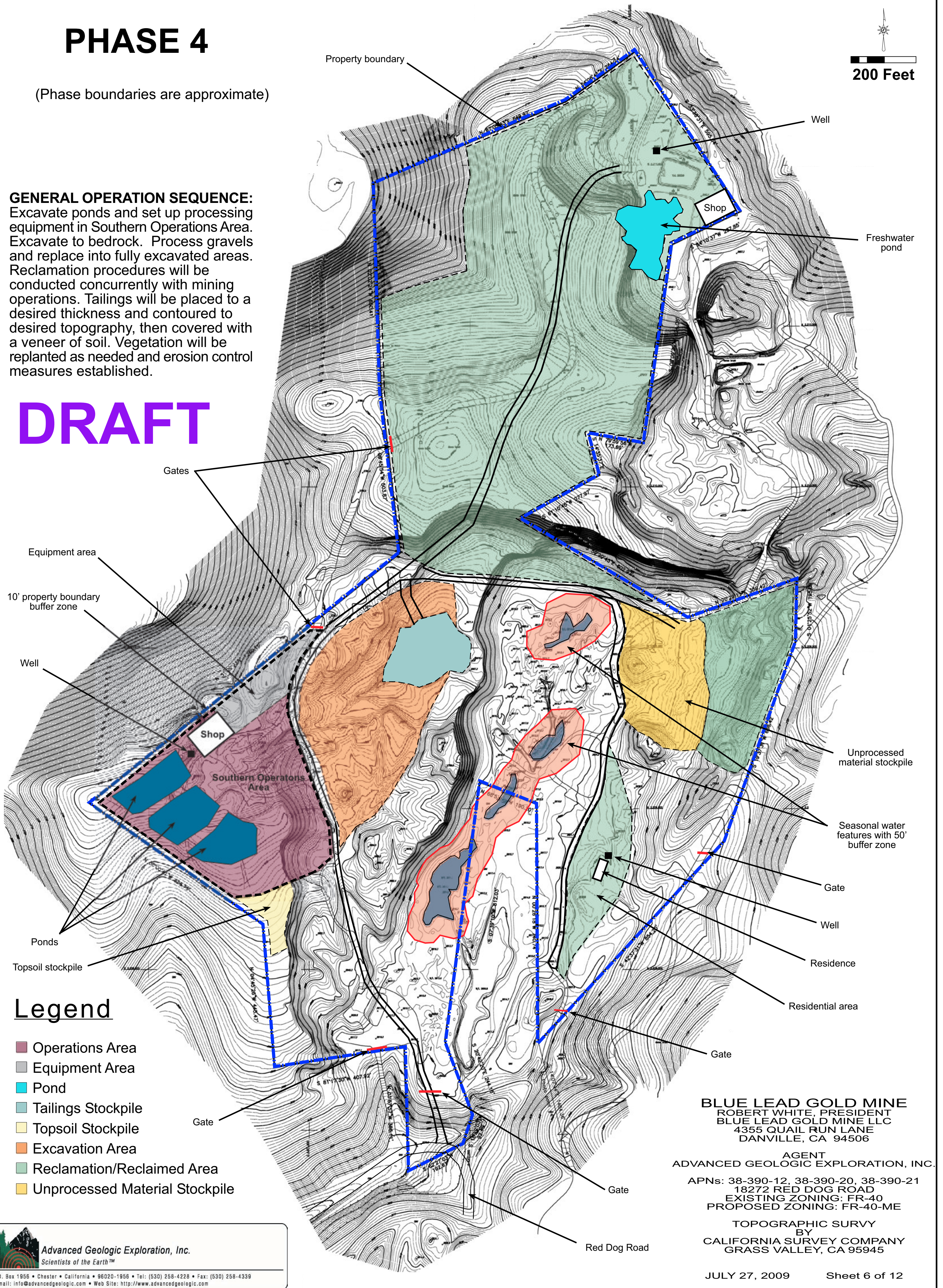
TOPOGRAPHIC SURVEY
 BY
 CALIFORNIA SURVEY COMPANY
 GRASS VALLEY, CA 95945

PHASE 4

(Phase boundaries are approximate)

GENERAL OPERATION SEQUENCE:
 Excavate ponds and set up processing equipment in Southern Operations Area. Excavate to bedrock. Process gravels and replace into fully excavated areas. Reclamation procedures will be conducted concurrently with mining operations. Tailings will be placed to a desired thickness and contoured to desired topography, then covered with a veneer of soil. Vegetation will be replanted as needed and erosion control measures established.

DRAFT



Legend

- Operations Area
- Equipment Area
- Pond
- Tailings Stockpile
- Topsoil Stockpile
- Excavation Area
- Reclamation/Reclaimed Area
- Unprocessed Material Stockpile

BLUE LEAD GOLD MINE
 ROBERT WHITE, PRESIDENT
 BLUE LEAD GOLD MINE LLC
 4355 QUAIL RUN LANE
 DANVILLE, CA 94506

AGENT
 ADVANCED GEOLOGIC EXPLORATION, INC.

APNs: 38-390-12, 38-390-20, 38-390-21
 18272 RED DOG ROAD
 EXISTING ZONING: FR-40
 PROPOSED ZONING: FR-40-ME

TOPOGRAPHIC SURVEY
 BY
 CALIFORNIA SURVEY COMPANY
 GRASS VALLEY, CA 95945

JULY 27, 2009

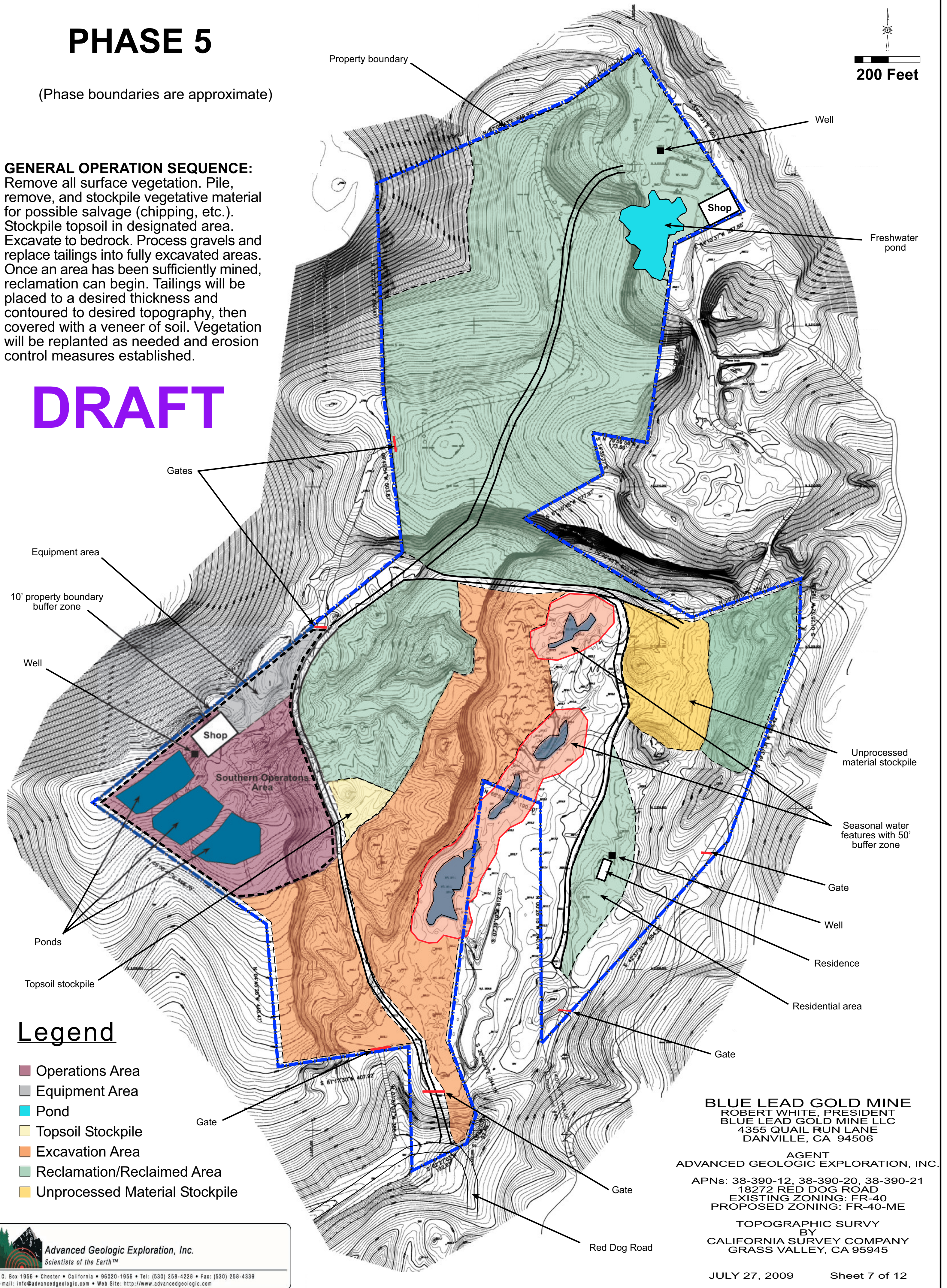
Sheet 6 of 12

PHASE 5

(Phase boundaries are approximate)

GENERAL OPERATION SEQUENCE:
 Remove all surface vegetation. Pile, remove, and stockpile vegetative material for possible salvage (chipping, etc.). Stockpile topsoil in designated area. Excavate to bedrock. Process gravels and replace tailings into fully excavated areas. Once an area has been sufficiently mined, reclamation can begin. Tailings will be placed to a desired thickness and contoured to desired topography, then covered with a veneer of soil. Vegetation will be replanted as needed and erosion control measures established.

DRAFT



Legend

- Operations Area
- Equipment Area
- Pond
- Topsoil Stockpile
- Excavation Area
- Reclamation/Reclaimed Area
- Unprocessed Material Stockpile

BLUE LEAD GOLD MINE
 ROBERT WHITE, PRESIDENT
 BLUE LEAD GOLD MINE LLC
 4355 QUAIL RUN LANE
 DANVILLE, CA 94506

AGENT
 ADVANCED GEOLOGIC EXPLORATION, INC.

APNs: 38-390-12, 38-390-20, 38-390-21
 18272 RED DOG ROAD
 EXISTING ZONING: FR-40
 PROPOSED ZONING: FR-40-ME

TOPOGRAPHIC SURVEY
 BY
 CALIFORNIA SURVEY COMPANY
 GRASS VALLEY, CA 95945

JULY 27, 2009

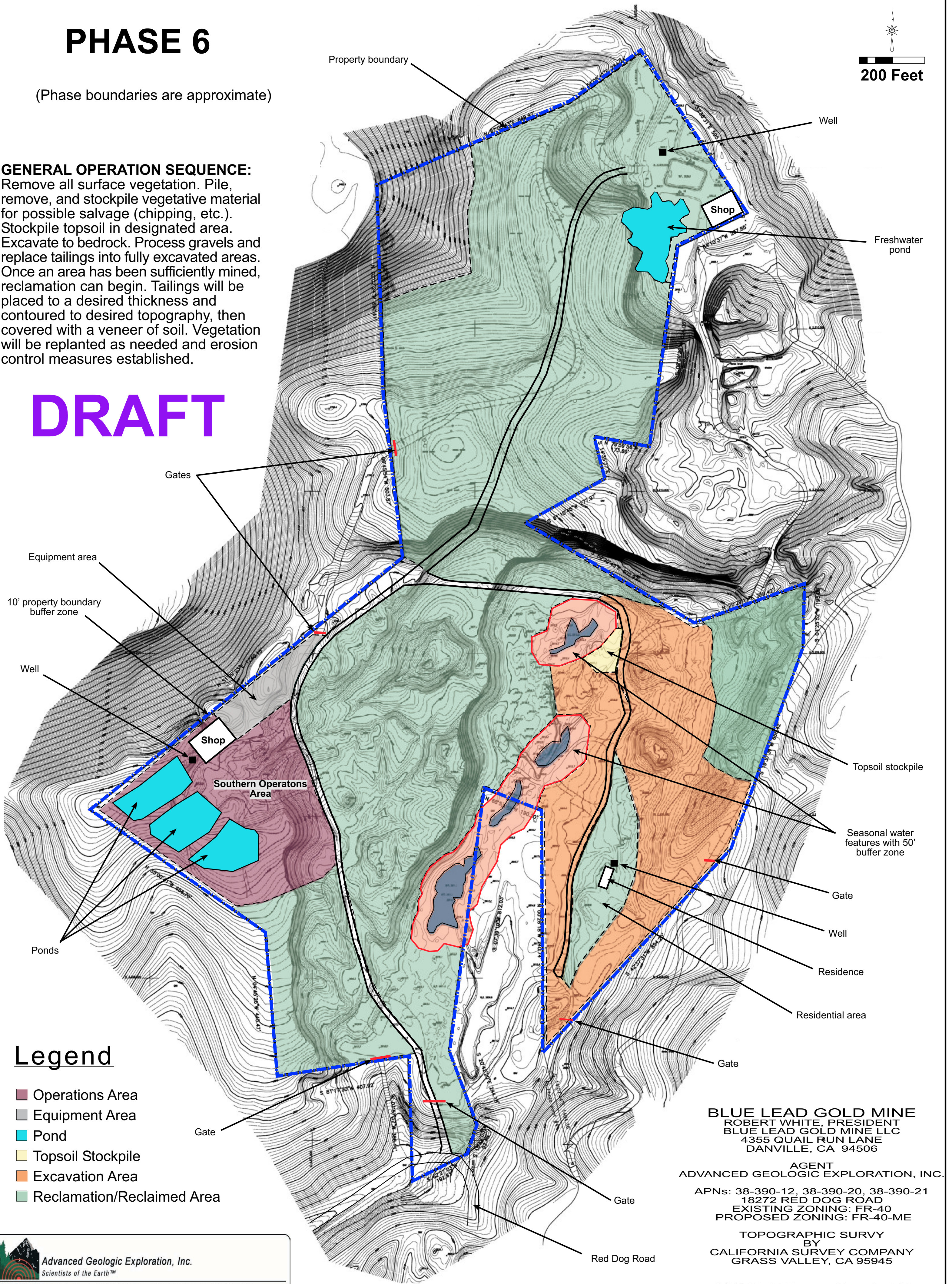
Sheet 7 of 12

PHASE 6

(Phase boundaries are approximate)

GENERAL OPERATION SEQUENCE:
 Remove all surface vegetation. Pile, remove, and stockpile vegetative material for possible salvage (chipping, etc.). Stockpile topsoil in designated area. Excavate to bedrock. Process gravels and replace tailings into fully excavated areas. Once an area has been sufficiently mined, reclamation can begin. Tailings will be placed to a desired thickness and contoured to desired topography, then covered with a veneer of soil. Vegetation will be replanted as needed and erosion control measures established.

DRAFT



Legend

- Operations Area
- Equipment Area
- Pond
- Topsoil Stockpile
- Excavation Area
- Reclamation/Reclaimed Area

BLUE LEAD GOLD MINE
 ROBERT WHITE, PRESIDENT
 BLUE LEAD GOLD MINE LLC
 4355 QUAIL RUN LANE
 DANVILLE, CA 94506

AGENT
 ADVANCED GEOLOGIC EXPLORATION, INC.

APNs: 38-390-12, 38-390-20, 38-390-21
 18272 RED DOG ROAD
 EXISTING ZONING: FR-40
 PROPOSED ZONING: FR-40-ME

TOPOGRAPHIC SURVY
 BY
 CALIFORNIA SURVEY COMPANY
 GRASS VALLEY, CA 95945

JULY 27, 2009

Sheet 8 of 12

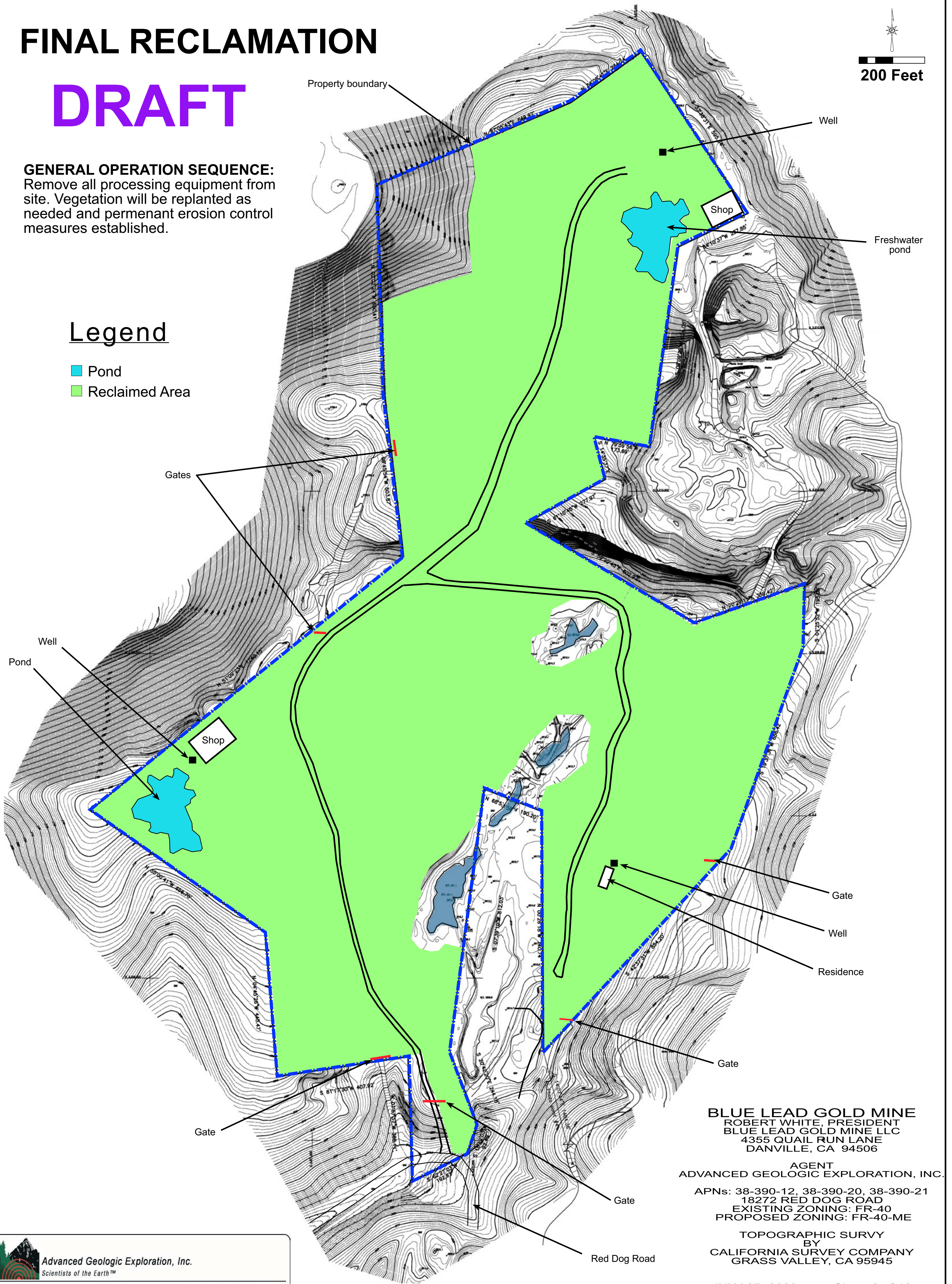
FINAL RECLAMATION

DRAFT

GENERAL OPERATION SEQUENCE:
Remove all processing equipment from site. Vegetation will be replanted as needed and permanent erosion control measures established.

Legend

- Pond
- Reclaimed Area



BLUE LEAD GOLD MINE
ROBERT WHITE, PRESIDENT
BLUE LEAD GOLD MINE LLC
4355 QUAIL RUN LANE
DANVILLE, CA 94506

AGENT
ADVANCED GEOLOGIC EXPLORATION, INC.

APNs: 38-390-12, 38-390-20, 38-390-21
18272 RED DOG ROAD
EXISTING ZONING: FR-40
PROPOSED ZONING: FR-40-ME

TOPOGRAPHIC SURVEY
BY
CALIFORNIA SURVEY COMPANY
GRASS VALLEY, CA 95945

JULY 27, 2009

Sheet 9 of 12