

Location Map for TTN 1-124 Lode Claims

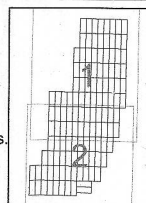
Sheet 2 of 2

TTN 1-16 lode claims were located on December 13, 2021.
 TTN 103-124 lode claims were located on December 15, 2021.
 TTN 65-72 & 91-102 lode claims were located on December 16, 2021.
 TTN 17-18, 27-62 lode claims were located on December 17, 2021.
 TTN 73-80 lode claims were located on December 18, 2021.
 TTN 43-52 lode claims were located on December 21, 2021 and
 TTN 19-26 lode claims were located on December 22, 2021
 in T5S R41E sections 15-16, 21-22, 27-28 and 32-34
 and in T6S R41E sections 3-5 in Esmeralda County, Nevada M.D.B.&M.

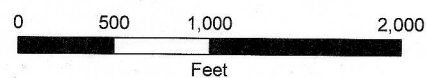
Locator:
 Kinross Gold U.S.A., Inc.
 5075 South Syracuse St., 8th Floor
 Denver, CO. 80237

Notes:
 Location Monuments are set 10' from claim end lines.
 All location and corner monuments are 2" X 2" X 4' wooden posts with scribed metal tags.
 All claims are 1500' x 600' unless otherwise noted.

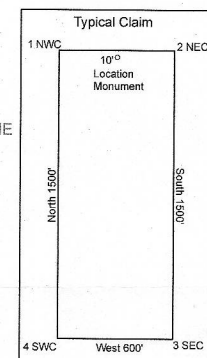
All Degrees and Minutes are reported to the nearest minute.
 All Distances are reported in feet to the nearest foot.
 The depicted Township, Range and Sections are a product of the Bureau of Land Management,
 Cadastral Survey. Commonly known as the PLSS, CadNSDI that originates from the BLM GCDB program.



Fieldwork by Great Basin Land Management, LLC.



Bearings reported in Nevada State Plane West zone
 Grid North (GN), Datum, 1983
 Units: US Survey Feet



NV105748953-NV105749076

RECEIVED
 MAR 10 2022
 BLM NVSO IAC