

15

14

13

T05S R41E

Note:
 Datum: 1983
 Projection: UTM
 Units: US Survey Feet
 All Bearings are reported in UTM Grid North.
 All Degrees and Minutes are reported to the nearest minute.
 All Distances are reported in feet to the nearest foot.

The depicted Township, Range and Sections are a product of the Bureau of Land Management, Cadastral Survey. Commonly known as the PLSS, CadNSDI that originates from the BLM GCDB program.

W NE

22

W SE

NW NE

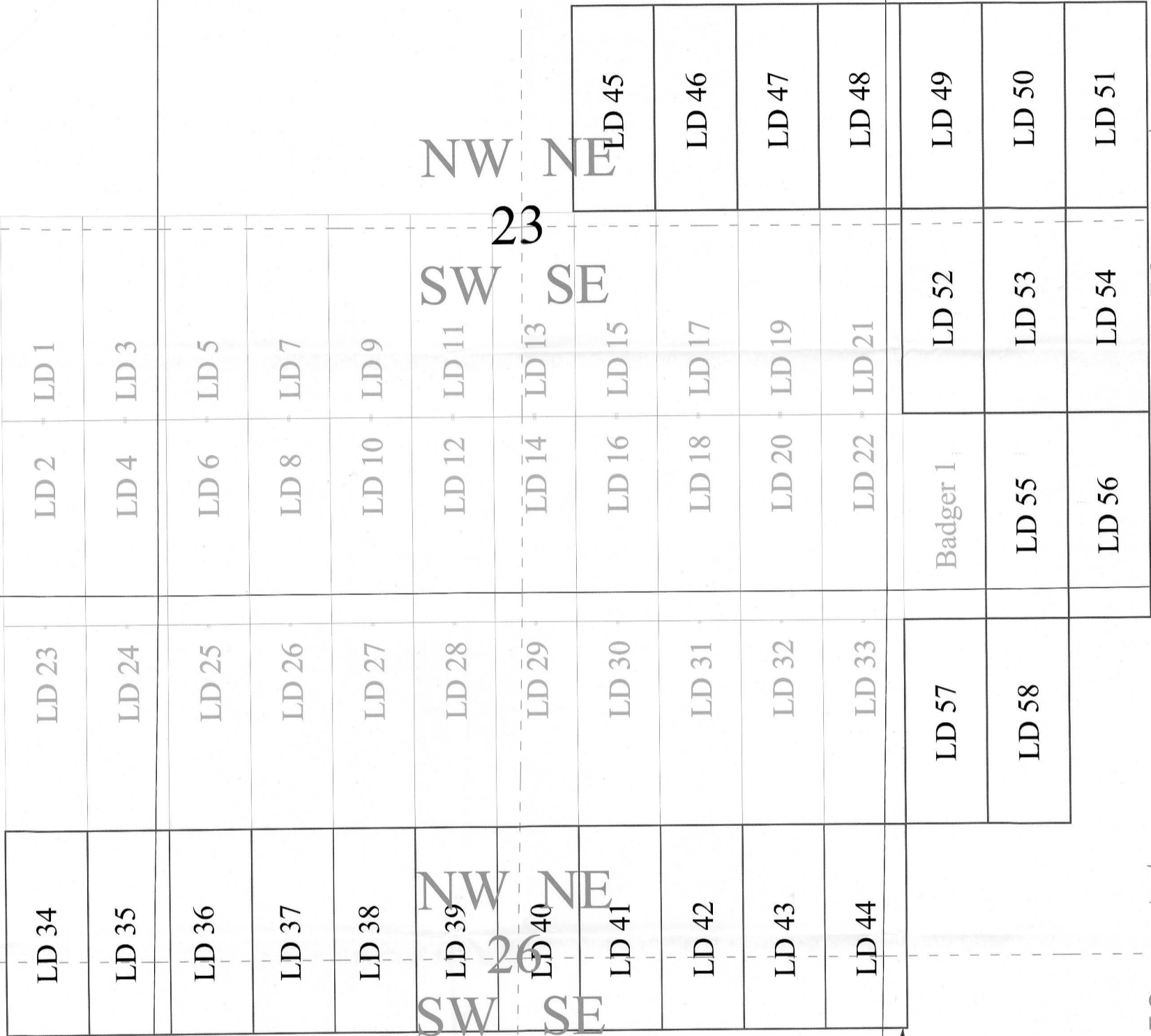
23

SW SE

NW N

24

SW S



W NE

27

W SE

NW NE

26

SW SE

NW N

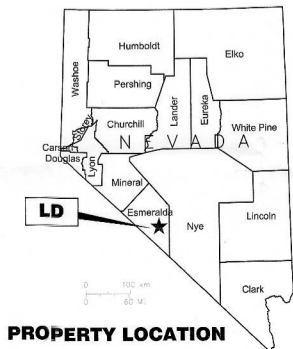
25

SW S

The SE Corner of LD 44 bears N5°3'E and is 2177' from the SW corner of Section 25 T5S R41E.

"LD" Lode claims Location Dates:
 4/23/2022, LD 34-44
 4/25/2022, LD 45-58 in
 Sections 23-27, T5S, R41E, all in
 Esmeralda County, Nevada, M.D.B.&M.

Locator:
 Aguila Gold Inc.
 A Nevada Domestic Corporation
 1305-1090 West Georgia St.
 Vancouver BC V6E 3V7, Canada

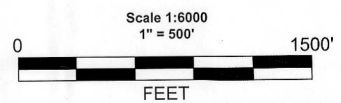
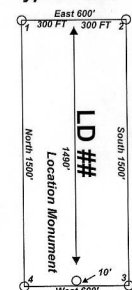


Location Map for LD 34-58
 Lode Claims

NV105764653-NV105764677

Notes:
 Location Monuments are set 10' from claim end lines unless noted otherwise. All location and corner monuments are 2" X 2" X 4' wooden posts with scribed metal tags. All claims are 600' by 1500' unless noted otherwise.

Typical Claim



LD_34-58_Claims_N83Z118Ft.pdf
 May 4, 2022
 Drawn By: Anders Hogrelus, Aguila Copper Corp.
 Field Work By: Anders Hogrelus
 Datum NAD83 Projection: UTM Zone 11
 Units: Feet

RECEIVED
 MAY 16 2022
 BLM NVSO IAC