

AMENDED NOTICE OF INTENT N101220

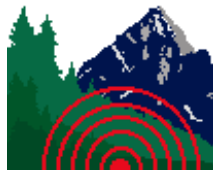
BULK TESTING ACTIVITIES FOR THE POVERTY GULCH PROJECT, GOLD POINT MINING DISTRICT, ESMERALDA COUNTY, NV



Prepared for
Carl Lane
Reno, NV

By
Advanced Geologic Exploration, Inc.
Chester, CA

August 26, 2024



Advanced Geologic Exploration, Inc.

Scientists of the Earth™

PO Box 1956, Chester, CA 96020 • Voice: (530) 258-4228 • Fax (530) 258-4339 • www.advancedgeologic.com

August 26, 2024

Perry Wickham, Field Manager
Bureau of Land Management
Tonopah Field Office
1553 South Main Street, P.O. Box 911
Tonopah, NV 89049
(775) 482-7800

RE: Amended Notice of Intent N101220 for the Poverty Gulch Project in the Gold Point Mining District, Esmeralda County, NV.

Dear Mr. Wickham:

The claimant of the Poverty Gulch (PG) 1 - 17, Poverty Gulch Extension (PGE) #1 - #68 and the First American #1 - #3 placer mining claims in the Gold Point Mining District, Esmeralda County, Nevada, is planning to conduct the third phase of a minimal impact, limited-scale mineral exploration and sampling activity on his claims. This project amends Notice of Intent N-101220 for the Poverty Gulch Project, which was permitted in 2022 and amended in 2023. The claimant plans on conducting a similar bulk testing activity as in 2022, but in a different area and using different equipment. All work will be conducted in previously disturbed areas; no new disturbances will occur.

Therefore, and pursuant to the Bureau of Land Management's (BLM's) 43 CFR 3809—Surface Management rules and regulations, the claimant submits this Amended Notice of Intent. For ease of understanding, we refer to the activities as the "Phase 3 Poverty Gulch Bulk Testing Project".

Contained herein are the specifics on how the claimant will go about his exploration and sampling procedures, and reclamation of their activities when completed. Included are maps and figures showing the locations of the claims, test trench locations, and overland travel routes.

Thank you for the opportunity to submit this Notice of Intent to your attention. If you have any questions or I can be of further assistance, please feel free to contact me at your convenience.

Sincerely,

Advanced Geologic Exploration, Inc.

Charles P. Watson
President, Chief Geologist

List of Appendices

Appendix A

- Figure 1: General Location Map
- Figure 2: Esmeralda County Map
- Figure 3: Vicinity Topographic Map
- Figure 4: Placer Claim Location Map (Topographic)
- Figure 5: Placer Claim Location Map (Satellite)
- Figure 6: 2023 Drill Hole Location Map
- Figure 7. BLM Produced Overland Travel Map
- Figure 8. Bulk Testing Location Map
- Figure 9. Example of Processing Site

Appendix B

BLM MLRS Data Sheets of Claims

Appendix C

Bulk Testing Sites GPS Waypoints



“Any relation to the land, the habit of tilling it, or mining it, or even hunting on it, generates the feeling of patriotism. He who keeps a shop on it, or merely uses it as a support for his desk and ledger, or to his manufactory, values it less.”

Ralph Waldo Emerson

A. GENERAL INFORMATION

The claimant of the Poverty Gulch (PG) 1 - 17, Poverty Gulch Extension (PGE) #1 - #68 and the First American #1 - #3 placer mining claims in the Gold Point Mining District, Esmeralda County, Nevada, plans to conduct the third phase of a minimal impact, limited-scale mineral exploration and sampling activity on his claims. This project amends Notice of Intent N-101220 for the Poverty Gulch Project, which was initially permitted in 2022, and amended for Phase 2 in 2023, the latter of which completed in November of that year. The claimant plans on conducting a similar bulk testing activity as in 2022, but in a different area and using different equipment. All work will be conducted in previously disturbed areas; no new disturbances will occur.

This Notice of Intent is designed to comply with all applicable Federal, State, and local laws, regulations, and standards, including but not limited to, Bureau of Land Management 43 CFR 3809–Surface Management rules and regulations, the Federal Water Pollution Control Act, 33 U.S.C. 1251 et seq., the Resource Conservation and Recovery Act, 42 U.S.C. 6901 et seq., the Comprehensive Environmental Response, Control, and Liability Act, 42 U.S.C. 9601 et seq., and other relevant State and local environmental laws, as well as public health and safety laws and other laws relating to the sighting, construction, operation, safety, and maintenance of any facility, improvement, or equipment on the property.

The planned start-up date is September 20, 2024, or upon approval by the BLM. The expected duration of the operation will be about a year. The expected date of completion of all exploration and sampling activities and final reclamation will be around September 20, 2025. The claimant is a sole proprietor and not a corporate entity.

Principal Claimant & Operator:

Carl Lane
6947 Windy Hill Way
Reno, NV 89511
(530) 363-0360
chlane@me.com
SSN: 336-529-9435

Representative:

Charles Watson, CA PG #7818
Advanced Geologic Exploration, Inc.
P.O. Box 1956, Chester, CA 96020
P.O. Box 1725, Tonopah, NV 89049
(530) 258-4228 or cell: (530) 375-0135
cwatson@advancedgeologic.com

B. PROPERTY OR AREA

The Poverty Gulch (PG 1 – 17)), Poverty Gulch Extension (PGE 1 – 68) and First American (FA 1 – 3) claim block consists of 88 placer claims (Figures 4 and 5). The claims secure roughly 1,760 acres of Tertiary mineral-rich river sands and gravels. This Phase 3 activity will only address a portion of the land holdings that was tested in the Phase 2 Drill Program (Figures 6 – 8).

C. PREVIOUS ACTIVITY RECLAMATION

The Phase 2 activities were completed in October 2023 and the majority of the reclamation was completed in November. On May 28, the BLM representative Kristin Reid met with Charles Watson, Project Representative, to review the previous reclamation activities. Subsequent correspondences were exchanged where on June 13, the BLM outlined specific areas that needed additional reclamation activities (Figure 7). As per our 2023 amended NOI, the claimant agreed to preform additional reclamation activities related to previous claimants in the area.

The disturbances from the 2022 Phase 1 activity were left unreclaimed were

- The upper Lane Wash sampling site.
- The materials processing area and the downslope drainage swale.
- The staging area.

In addition, a previous claimant, referred herein as TXO Resources, LLC, left three areas of disturbance that the BLM requested this operator to reclaim,

- A TXO test trench in upper Lane Wash and the road that accesses the upper wash.
- A TXO test pit where Lane Wash meets the Poverty Gulch Road.
- A TXO test pit along the Poverty Gulch Road down slope of Lane Wash.

In addition, the BLM request this operator to reclaim three areas of disturbance left over by a ~2018 claimant, referred as Karlingsey,

- A Karlingsey test trench near the Poverty Gulch Project Phase 2 drill hole H-23.
- A Karlingsey test trench near the Poverty Gulch Project Phase 2 drill hole H-30.
- A Karlingsey test trench near the Poverty Gulch Project Phase 2 drill hole H-36.

These reclamation activities were conducted between June 25 – 26 and an email with photos showing the completed activities was sent to the BLM on August 26. We trust that these activities conclude our previous reclamation obligations, thus leaving the existing reclamation bond available for the 2024 Phase 3 activities contained herein.

With all the 2024 Phase 3 activities are being conducted in previously disturbed areas, no increased surface disturbance bond is required.

D. DESCRIPTION OF THE OPERATION

Access and Vegetation.

Access is via an Esmeralda County maintained gravel road that extends from Gold Point and up the Poverty Gulch Wash, through a narrow canyon where the Tertiary gravel deposits are exposed, and then up on top of Slate Ridge where there is a large plateau. The County Road extends eastward and beyond the claim block. The entire project is contained within Section 19, Township 7 South, Ranger 42 East and Section 24, Township 7 South, Ranger 41.5 East, MDBM.

Vegetation is sparse, consisting of low-lying sagebrush and grasses with some cactus and Joshua Trees.

Map of Operations.

See Project Maps on Figures 1 - 8.

Dates of Operations.

Estimated start date: September 20, 2024.

Estimated completion date: September 20, 2025.

Project Description.

The claimant plans to test the remnant Tertiary gravel deposits for mineral content using similar methods to that of the 2022 Phase 1 activity. Twenty sites have been chosen and all the test sites, their exploration test pits, and access routes will be in previously disturbed areas associated with the Phase 2 drilling project. No new roads will be created, and no new disturbances will be made. In summary, the claimant plans to excavate material, transport it to a staging area, where it will be concentrated through a water process to recover the minerals. The total amount of processed material will be about 300 cubic yards (or 420 tons¹).

Material will be excavated using a track excavator, classifying through a free-standing grizzly to create a stockpile of select material, then transported to a staging area to be processed. Work will only be conducted at one or two sites at a time, and those areas will be reclaimed before moving to the other site. Topsoil and disturbed vegetation will be stockpiled adjacent to digs for use in reclamation. Safety fencing will be erected around the perimeter of any excavation left open overnight.

The Phase 2 drilling program provided an excellent window into the subsurface, therefore, our understanding of what sedimentary type, either mudstones, sandstones or conglomerates, and occurs at what depth, is already known. We have selected 20 sites to conduct our subsurface sampling activities (Figure 8). The GPS way point locations are presented in Appendix C. These test trenches will be roughly 20 feet long, 3 feet wide, and average 15 feet deep. This calculates to roughly 33 cubic yards of excavated material or 660 cubic yards in 20 trenches. However, our tests will only require 10 cubic

¹ Cubic yards x 1.4 = tons of gravel

yards of selected material. About half the sites will have two sedimentary layers that will be sampled, thus resulting in two 10 cubic yard samples, which is 30 – 10 cubic yards, for a total of 300 cubic yards (or 420 tons). The material not used will be backfilled into the trench.

Excavations Summary:

Trench bulk excavation amounts:

1 test trench @ 20' x 3' x 15' = 900 ft³ or 33 yd³ x 20 trenches = 660 yd³ or 924 tons.

Processed material amounts:

10 yd³ per sample x 30 samples = 300 yd³ material or 420 tons.

Staging Area.

A staging area will be at an established location along the Esmeralda County Road near the hairpin corner, which is at the western portion of the property Near Drill Hole H-2 (37.314883, -117.315463 (Figure 8). This is a preexisting disturbed area used by many individuals, including previous claimants and recreational enthusiasts. The staging area will also be used for overnight RV camping, which will act as nighttime security. We will have two 20-foot steel conex boxes for equipment storage.

The processing area will consist of a stockpile area, a level pad for a trommel, and a series of four plastic-lined ponds that are approximately 15 feet wide x 40 feet long x 10 feet deep (Figure 9). The ponds will be linked in series such that the water is clarified and recirculated. Water will be brought in from a private well in Gold Point, as necessary, using a 2,000-gallon water truck.

The screened material will be fed into a hopper-feeder that will dispense into a portable trommel-sluicelox system where the desired material will be recovered. The coarse waste material (tailings) will collect in the first plastic-lined pond (tailings pond) and the fines or suspended sediment will be separated in the next pond, and a third pond will act as a holding reservoir for the clarified water. The water will be recirculated back into the

processing circuit. The ponds will be cleaned out from time to time and returned to the various source trenches.

Collected concentrates will be loaded into supersacks and transported to an offsite facility for further analysis.

Surface Disturbance.

All work for the Phase 3 bulk testing activity will be conducted in previously disturbed areas from the Phase 2 activity. No new disturbance is planned.

The BLM performed a site visit on May 28, 2024, and identified and measured the surface disturbance areas associated with the 2023 Phase 2 Poverty Gulch Project Phase 2 drill hole. They calculated 2.2 acres was associated with overland travel and 3.74 acres for drill sites, totaling 5.94 acres. Some disturbances from the 2022 Phase 1 activity had also not been reclaimed, and some equipment was left on site. The BLM summarized that if the previous disturbances were reclaimed and the left-over equipment removed, that the total disturbed acreage results in less than 5.0 acres and thus, could still fall within the Notice of Intent guidelines.

Therefore, the current Reclamation Bond of \$21,548 is requested to be held with no additional cost amounts required.

F. ENVIRONMENTAL PROTECTION MEASURES

Employee Training.

The claimant will train employees, contractors, and other related personnel as to any environmental or cultural resources.

Air Quality.

Vehicular traffic will be minimized, and prudent speeds observed to minimize fugitive dust emissions, protect wildlife and livestock, and maintain operational safety. Vehicles

associated with the Project will maintain a safe and appropriate speed limit for existing road conditions.

Erosion Prevention and Control.

The claimant will conduct operations to minimize soil erosion. Equipment will not be operated when ground conditions are such that excessive resource damage or increased sediment transport will occur. Best management practices (BMPs) will be utilized to control erosion and sedimentation.

BMPs for sediment control will be employed as needed during construction, operation, and reclamation to minimize sedimentation of disturbed areas. Sediment control structures will include, but not be limited to, fabric and/or certified weed free straw bale filter fences, siltation or filter berms, and down gradient drainage channels to prevent unnecessary or undue degradation to the environment. To control erosion from active sites, certified weed-free straw bales and silt fences will be placed in drainages to capture sediment, where required.

Stormwater Control.

During the summer months, within a 72-hour notice of a National Weather Service forecast of a 30% chance of severe thundershowers, erosion control measures will be established. Within 24 hours of the forecasted event, processing will cease, and measures will be taken to protect the site from excessive erosion. Heavy equipment will not be used during or following rainstorms to prevent excessive soil disturbance. Prior to these events, stockpiles will be tarped or surrounded with straw wattles to prevent soil movement. Diversion rills and berms will be constructed to keep storm water from entering the trenches and processing areas. Sediment controls, such as certified weed-free hay bales, filter fences, or other controls will be implemented, as necessary.

Drainage structures will be constructed or installed where necessary to prevent or minimize erosion and sedimentation. Drainage structures will consist of, but not be limited to, water bars, borrow ditches, contour furrows, and culverts sized to handle maximum seasonal water flows.

Disturbed areas will be broadcast-seeded with an approved seed mix to minimize erosion immediately after construction. Once an area has been revegetated, notices and/or signs may be posted to allow vegetation to establish while reducing or restricting vehicular traffic.

Water Quality.

BMPs for sediment control will be used during construction, operation, and reclamation to minimize fugitive sediment from the disturbed areas.

Wastes.

Non-hazardous project-related refuse will be collected in approved trash bins and/or containers and hauled from the site by the operator or their contractors, for disposal at an approved landfill on a regular basis. The bins and/or containers will be equipped with weighted lids. Debris that may have a hazardous characteristic, residue, or fluids will not be disposed of in these trash bins. To minimize impacts during precipitation events, trash bins will be regularly inspected for leaks and the weighted lids will remain closed except when depositing debris. The trash bins will not contain materials that may attract wildlife (food items, etc.) and will be emptied on a regular basis.

A port-a-potty will be leased and serviced on an as needed basis.

Fuel and Hazardous Material.

Hazardous substances employed for the Project will include diesel fuel, gasoline, hydraulic fluid, and lubricating grease. The backhoe and/or skid steer will be fueled from an approved pick-up bed transfer tank. Smaller equipment will be fueled from approved 5-gallon fuel containers, or in an approved pick-up bed transfer tank. Fuel will be kept in the bed of the pick-up truck or on fuel-resistant-plastic tarps during operations. Transportation of these materials will be conducted in accordance with applicable regulatory guidelines.

The backhoe and/or skid steer will be in good repair and will be free of leakage of lubricants, fuel, coolants, and hydraulic fluid. It will be fueled and parked in the same area each day when not in use. Oil absorbent pads will be available at all areas where fuel or lubricants are transferred to machinery, to catch spills or dripping fuel. Fuel and pumps not stored in a vehicle will be placed in a fuel-resistant-plastic lined containment trench, or impervious container of adequate size to contain twice the volume of fuel and oil capacity in the pumps and fuel containers. Unused containers, oil cans, grease tubes, used rags, and other fuel contaminated products will be removed from the site and disposed of by acceptable means.

No chemicals will be used in the drilling activities. No hazardous materials will be stored at the site.

Plants and Wildlife.

Measures to maintain and protect wildlife and their habitat include avoiding site disturbance where possible and minimizing the area when it must be disturbed, using existing roads, trails and dry washes, ramping and fencing of open pits, and concurrent reclamation practices. No Joshua Trees will be removed during the exploration activities. There are no active streams near the area, and no chemicals will be used.

Cultural Resources.

While conducting operations, in accordance with 43 CFR § 3809.420 (b) (8), the claimant will not knowingly disturb, alter, injure, or destroy any scientifically important paleontological remains or any historical or archaeological site, structure, building or object on Federal lands.

The claimant shall immediately bring to the attention of the authorized officer any cultural and/or paleontological resources that might be altered or destroyed on Federal lands by our operations and shall leave such discovery intact until told to proceed by the authorized officer. The authorized officer shall evaluate the discoveries brought to his/her attention, act to protect or remove the resource, and allow operations to proceed within 10 working days after notification to the authorized officer of such discovery.

The claimant will not remove, disturb, alter, injure, or destroy any historical or archaeological site, structure, building, object, or artifact that meets criteria for listing on the National Register of Historic Places, or has not been evaluated for National Register eligibility. The claimant will be responsible for ensuring that employees, contractors, or any others associated with the Project do not damage, destroy, or vandalize archaeological or historical sites. Should damage to cultural resources within, or near, the Project occur during the period of construction, operation, or rehabilitation due to the unauthorized, negligent, or inadvertent actions of the claimant or other Project personnel, the claimant will be responsible for costs of rehabilitation or mitigation. Individuals involved in illegal activities could be subject to penalties under the Archaeological Resources Protection Act (16 U.S.C. 470ii), the Federal Land Management Policy Act (43 U.S.C. 1701), the Native American Graves and Repatriation Act (16 U.S.C. 1170) and other applicable statutes.

If human remains/burials or any previously unidentified cultural (archaeological or historical) resources are discovered during the conduction of activities under the approved Plan, the claimant will immediately cease activities within 100 feet of the discovery, ensure that the discovery is appropriately protected, and immediately notify the BLM Authorized Officer by telephone, followed with written confirmation. Work will not resume, and the discovery will be protected until notified in writing by the BLM Authorized Officer that compliance with the provisions for mitigating unforeseen impacts as required by 43 CFR § 3809, and additional consultation per 36 CFR § 800.13.b.3, have been satisfied.

During its activities, the claimant will not tamper with or destroy any existing survey monuments according to § 3809.420 (b) (9).

Weed Management.

The claimant will be responsible for treating weeds found within surface disturbing activities created by its operations. Weed infestations will be avoided, when possible, to prevent their spread. Equipment mobilizing to the Project will be inspected and cleaned before entering the Project to prevent new noxious weed species from being transported

to the site. As part of weed control measures, the claimant will require that the undercarriage of all contractor vehicles be inspected prior to entering the Project area if the vehicle is coming from an area outside of Nevada.

All seed and mulch used in reclamation and straw bales used for sediment control will be certified weed-free.

Only chemicals approved for use on public land will be used for invasive, non-native weed treatment. The claimant will conduct weed eradication programs annually in areas of their activities as needed. Areas of known noxious weeds, invasive, and non-native species will be avoided during periods when weeds could be spread by vehicles (i.e., periods of potential seed dispersal).

Re-establishment of vegetation in disturbance areas will be conducted as soon as practical to reduce the potential for wind and water erosion, minimize impacts to soils and vegetation, and help prevent the spread of noxious weeds, including invasive and non-native species.

Reclaimed areas will be seeded with BLM-approved recommendations for seed mix, application rates, and seeding methods. The Best Management Practices of actively treating noxious weeds, invasive and non-native species upon discovery will also prevent these weed species from spreading and dominating the site.

Reclamation.

Reclamation of disturbed areas resulting from activities outlined in this Notice will be completed in accordance with Federal 43 CFR § 3809 as well as State of Nevada NAC 519A regulations and requirements.

Reclamation will be accomplished by backfilling each test trench, plus a few inches to account for future settling, then the surrounding disturbed ground will be groomed to conform to the natural topography. Native, weed free vegetative debris (brush, twigs, grasses, etc.) will be scattered over the disturbed area. Any overland travel routes will be groomed to natural conditions and seeded with a BLM-approved seed mix.

Final reclamation will include the removal of all exploration equipment, trash, vehicles, RVs, conex boxes, etc.

Mobilization and Demobilization.

Fleet requirements are calculated based on SRCE output.

Surface Disturbance.

All work for the Phase 3 bulk testing activity will be conducted in previously disturbed areas from the Phase 2 activity. No new disturbance is planned.

The BLM performed a site visit on May 28, 2024, and identified and measured the surface disturbance areas associated with the 2023 Phase 2 Poverty Gulch Project Phase 2 drill hole. They calculated 2.2 acres was associated with overland travel and 3.74 acres for drill sites, totaling 5.94 acres. Some disturbances from the 2022 Phase 1 activity had also not been reclaimed, and some equipment was left on site. The BLM summarized that if the previous disturbances were reclaimed and the left-over equipment removed, that the total disturbed acreage results in less than 5.0 acres and thus, could still fall within the Notice of Intent guidelines.

Re-Contouring, Seedbed Preparation, and Seeding.

A backhoe and/or skid steer will be used to complete site recontouring and cross-hatched scarifying of disturbances. Generally, the final surface of operating sites and scarified disturbances will be left in rough condition to hold seed and to optimize germination. Reclaimed areas will be broadcast seeded with an approved seed mix and scarified where accessible with the use of chain drags, harrows, or similar implements. Seeding will be completed at the appropriate time of year as advised by BLM staff.

Currently, the operator does not propose to utilize fertilizer or mulch. Final revegetation will be consistent with the post-exploration land uses of grazing, wildlife habitat, and recreation.

The claimant will monitor revegetation success and the presence of noxious weeds on an annual basis until release. Weed control will be performed by the claimant during the appropriate season to eradicate infestations of noxious weeds, if necessary.

Measures used to Minimize Sediment Loading.

Reclamation operations will be implemented when each hole is completed. Regraded slope angle, revegetation (including growth media placement), and BMPs will be used to limit erosion and reduce sediment in runoff. Silt fences, sediment traps, or other BMPs will be used to prevent the migration of eroded material until reclaimed slopes and exposed surfaces have demonstrated erosional stability.

Reclamation Bond.

The current Reclamation Bond of \$21,548 is requested to be held with no additional cost amounts required.

Reclamation Schedule.

Operational success will determine the reclamation schedule. All disturbances will be reclaimed at the earliest opportunity. Disturbances will be reclaimed as the project progresses. We anticipate all disturbances to be reclaimed by the conclusion of the project, which should be no later than November 22, 2023.

Earthwork and revegetation activities are limited by the time of year during which such activities can be effectively implemented. Site conditions and/or yearly climatic variations may require that this schedule be modified to achieve revegetation success.

Reclamation activities will be coordinated with the administering agency, as necessary. Monitoring of revegetation success will be conducted annually for a minimum of three (3) years, or until revegetation standards have been met.

Monitoring.

The operator will notify the BLM when activities are completed. Post-closure management will commence on reclaimed areas following completion of the reclamation work for the area. The BLM will be notified before the commencement of final reclamation work. Monitoring of revegetation success will be conducted annually for a minimum of three (3) years or until revegetation standards have been met as determined by BLM. Revegetation monitoring will occur based on seasonal growth patterns, precipitation, and weather conditions. Measures will be taken during extended periods of non-operation to control erosion at these sites.

Certification.

The operator certifies that the reclamation of all areas disturbed under this Notice will be completed to 43 CFR 3809 standards and that reasonable measures will be taken to prevent undue or unnecessary degradation of Federal lands during operations.

This Notice of Intent was prepared by Charles Watson of Advanced Geologic Exploration, Inc. at the direction of the project claimant, Carl Lane. If you have any questions or if you need further assistance, please feel free to contact Charles Watson at your convenience at (o) (530) 258-4228, (c) **(530) 375-0125**, or at cwatson@advancedgeologic.com.

Sincerely,

Advanced Geologic Exploration, Inc.



Charles P. Watson
President and Chief Geologist

Appendix A

Figures & Maps

Poverty Gulch Drilling Project



Advanced Geologic Exploration, Inc.
Scientists of the Earth™
 P.O. Box 1956 • Chester • California • 96020
 Tel: (530) 258-4228 • Fax: (530) 258-4339

General Location Map

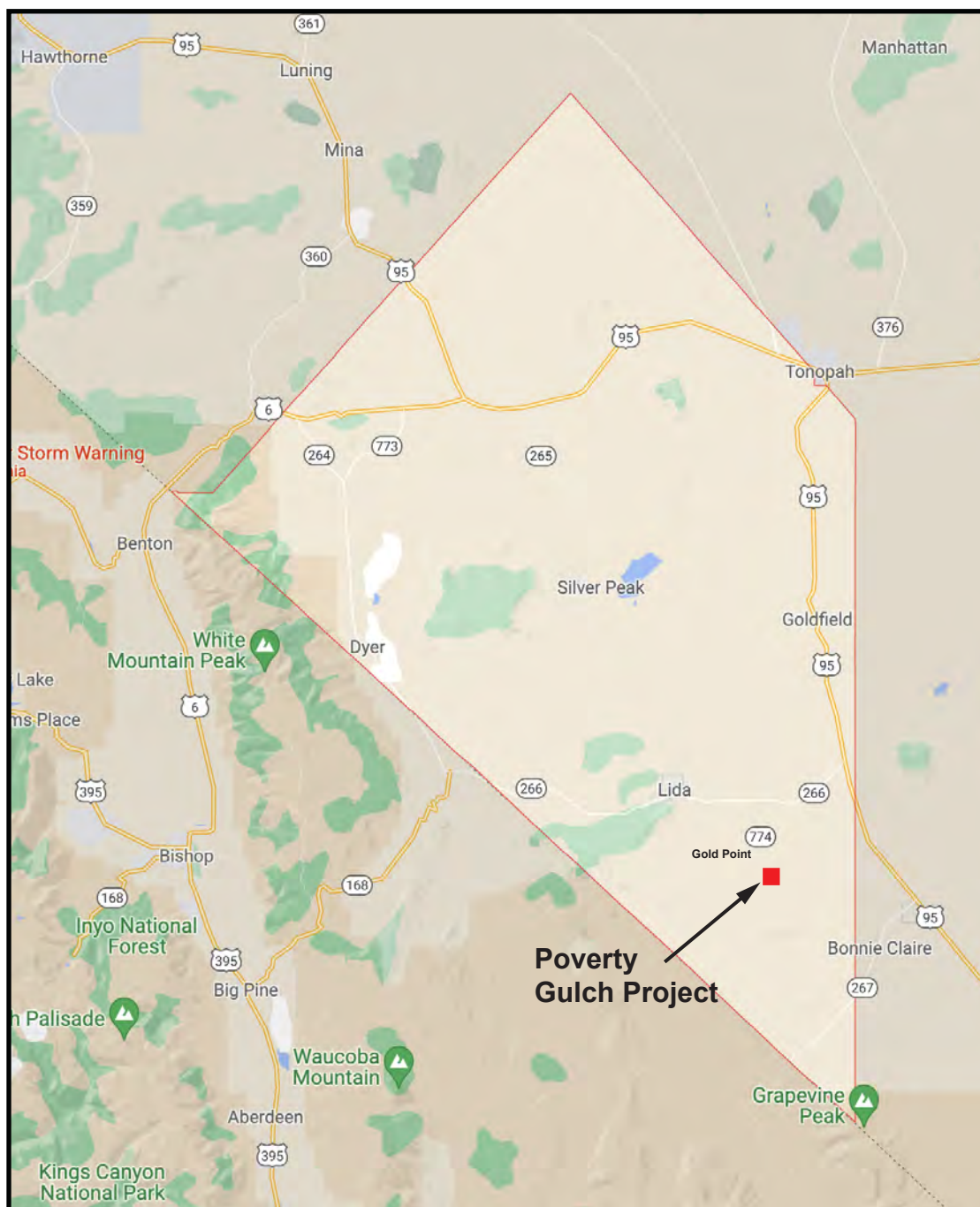
Gold Point Mining District

T. 7 S, R.41.5 & 42 E. MDM

Esmeralda County, NV

Figure 1

Poverty Gulch Drilling Project



Advanced Geologic Exploration, Inc.
Scientists of the Earth™
 P.O. Box 1956 • Chester • California • 96020
 Tel: (530) 258-4228 • Fax: (530) 258-4339

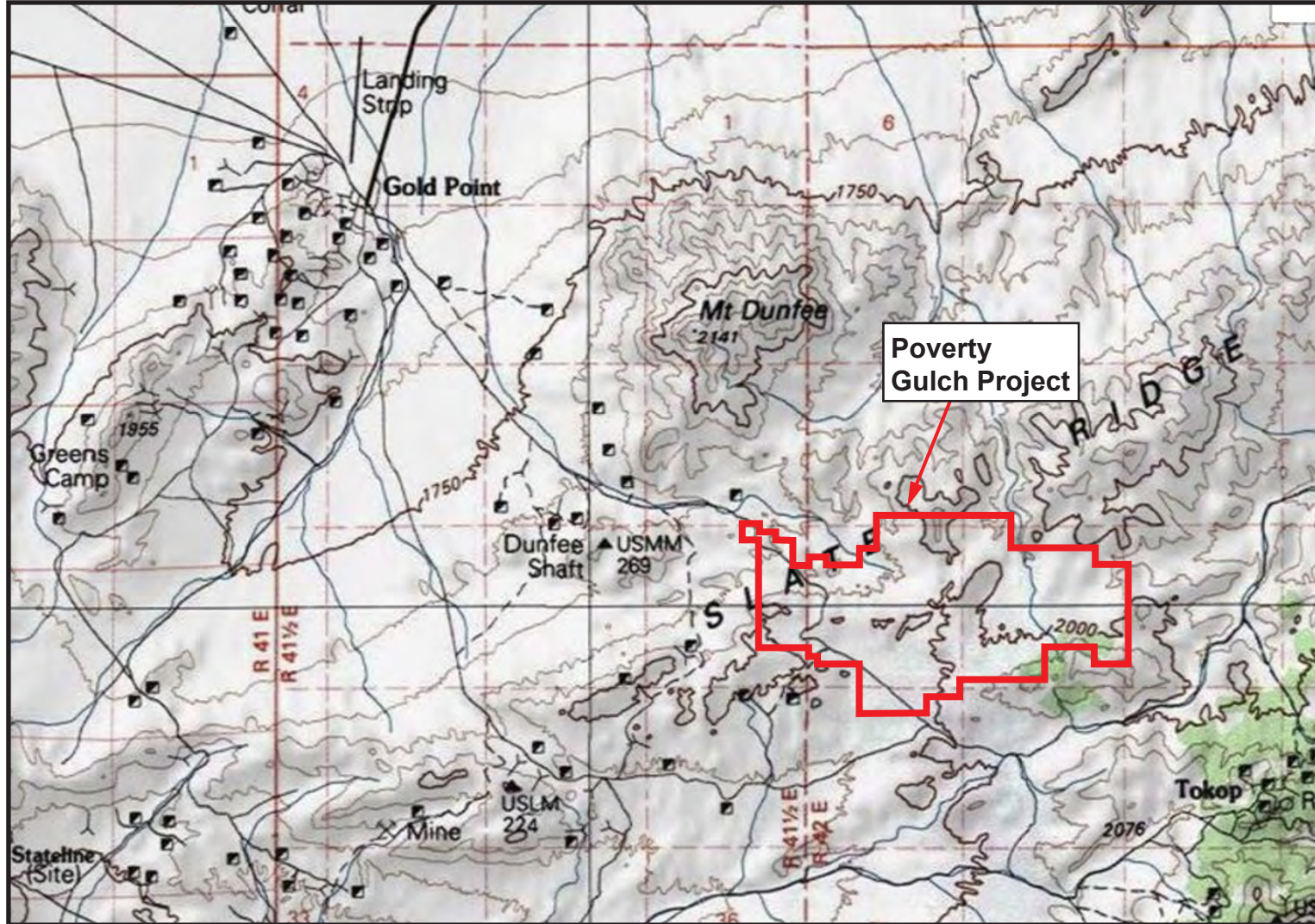
Esmeralda County Location Map

Gold Point Mining District

T. 7 S, R.41.5 & 42 E. MDM

Esmeralda County, NV

Figure 2

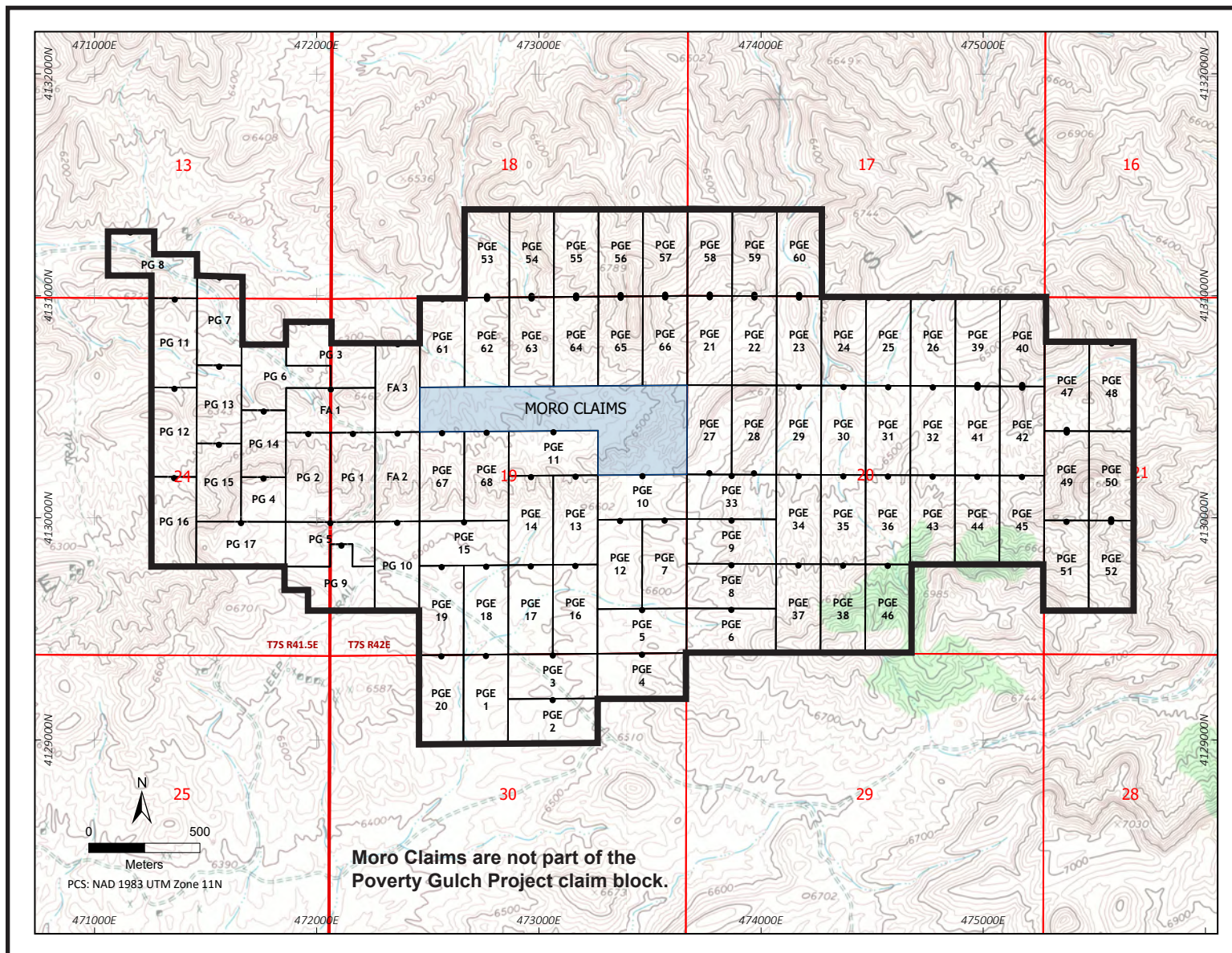


Advanced Geologic Exploration, Inc.
Scientists of the Earth™
 P.O. Box 1956 • Chester • California • 96020
 Tel: (530) 258-4228 • Fax: (530) 258-4339

Poverty Gulch Drilling Project

Vicinity Topographic Map

Gold Point Mining District	T. 7 S, R. 41.5 & 42 E. MDM
Esmeralda County, NV	Figure 3

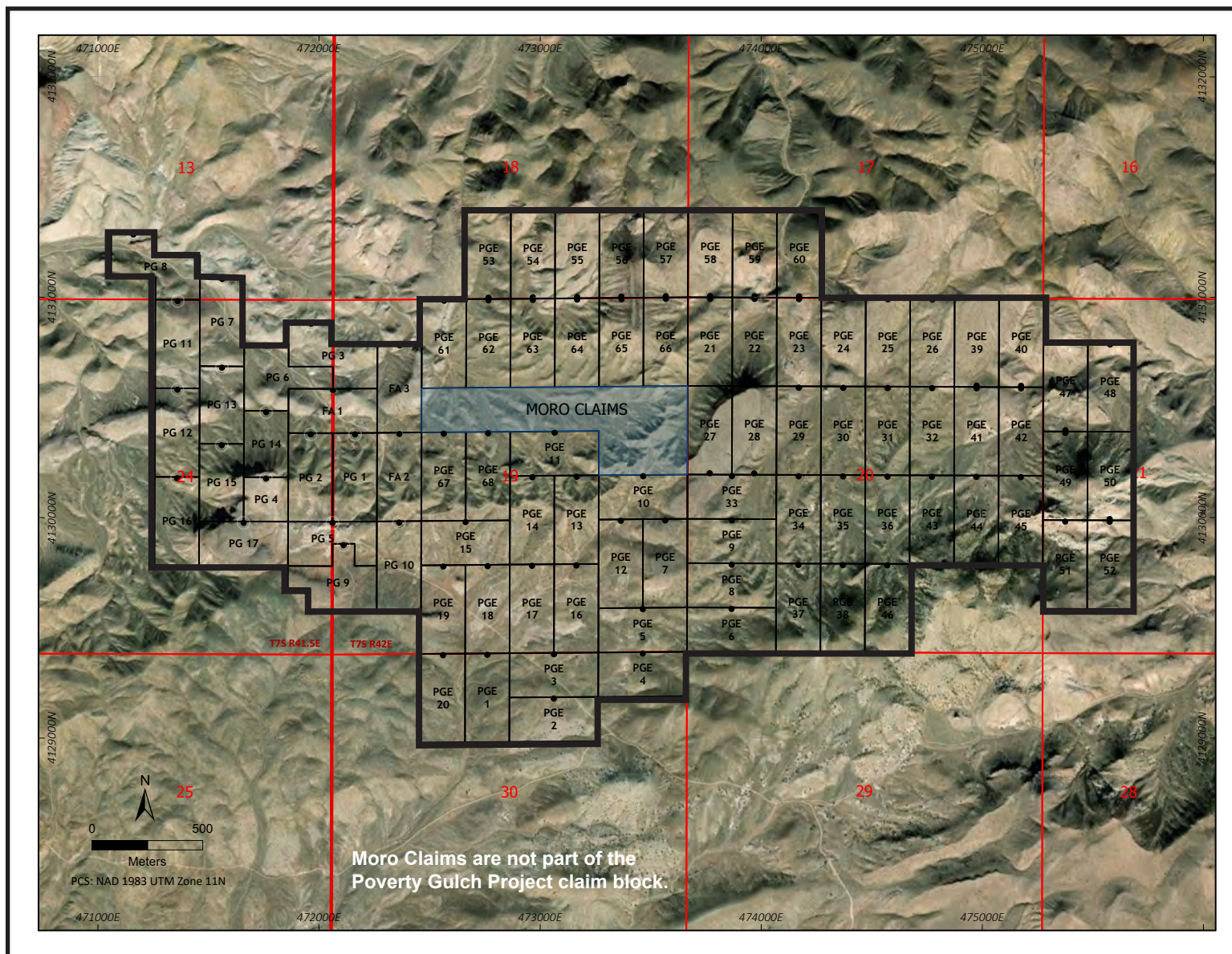


Advanced Geologic Exploration, Inc.
Scientists of the Earth™
 P.O. Box 1956 • Chester • California • 96020
 Tel: (530) 258-4228 • Fax: (530) 258-4339

Poverty Gulch Bulk Testing Project

Placer Claim Location Map

Gold Point Mining District	T. 7S, R. 40 & 41.5E, MDM
Esmeralda County, NV	Figure 4

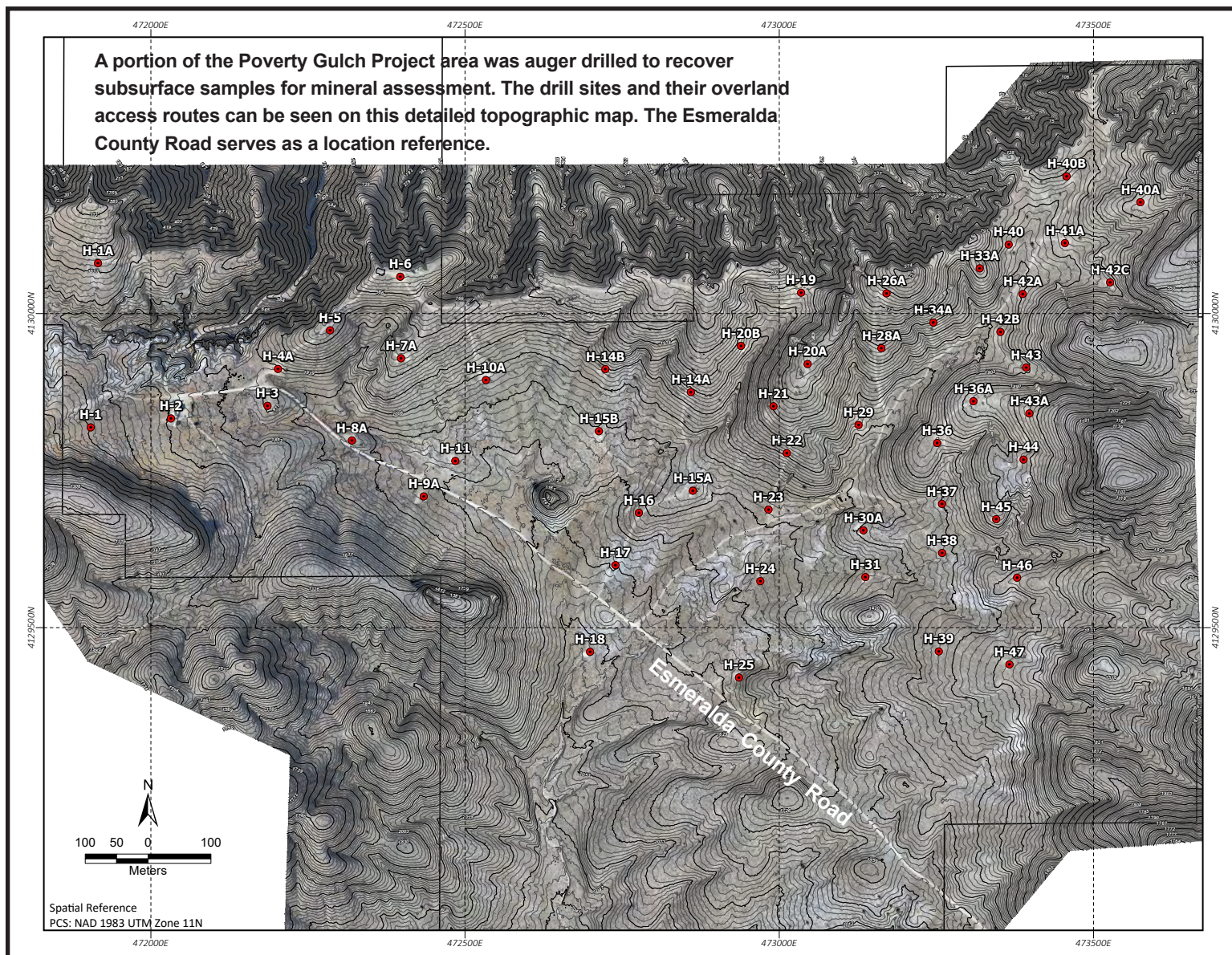


Advanced Geologic Exploration, Inc.
Scientists of the Earth™
 P.O. Box 1956 • Chester • California • 96020
 Tel: (530) 258-4228 • Fax: (530) 258-4339

Poverty Gulch Bulk Testing Project

Placer Claim Location Map

Gold Point Mining District	T. 7S, R. 40 & 41.5E, MDM
Esmeralda County, NV	Figure 5



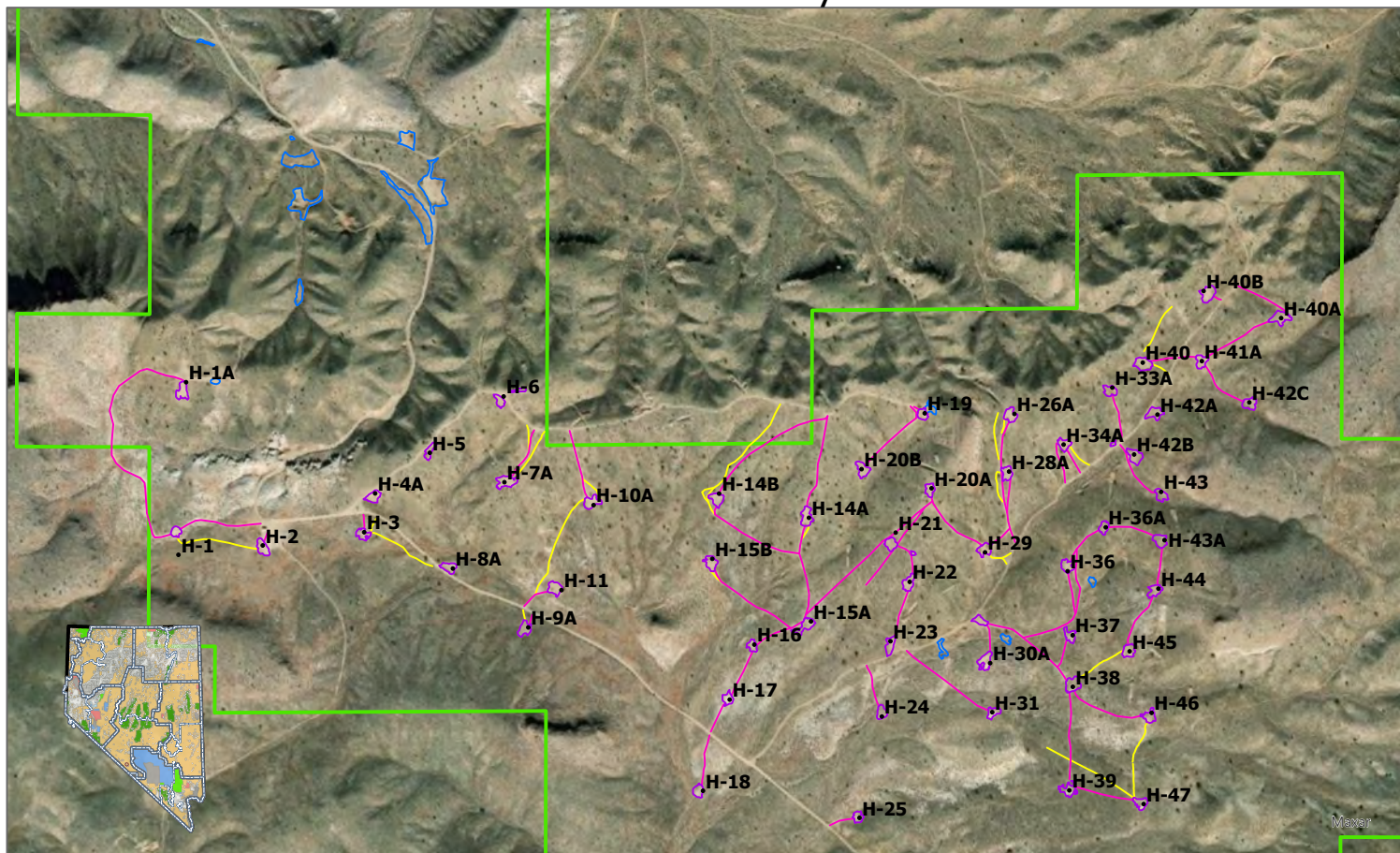
Advanced Geologic Exploration, Inc.
Scientists of the Earth™
 P.O. Box 1956 • Chester • California • 96020
 Tel: (530) 258-4228 • Fax: (530) 258-4339

Poverty Gulch Bulk Testing Project

2023 Drill Hole Location Map

Gold Point Mining District	T. 7S, R. 40 & 41.5E, MDM
Esmeralda County, NV	Figure 6

NVN-101220 Poverty Gulch



0 0.04 0.07 0.15 Miles

PG_OriginalDisturbance
PG_AmendBoundary
DrillSitesDisturbance2024

ExtraTracks2024
PG_Drillholes Updated 2024
NewOffRoadTravel



No warranty is made by the Bureau of Land Management as to the accuracy, reliability or completeness of these data for individual use or aggregate use with other data.



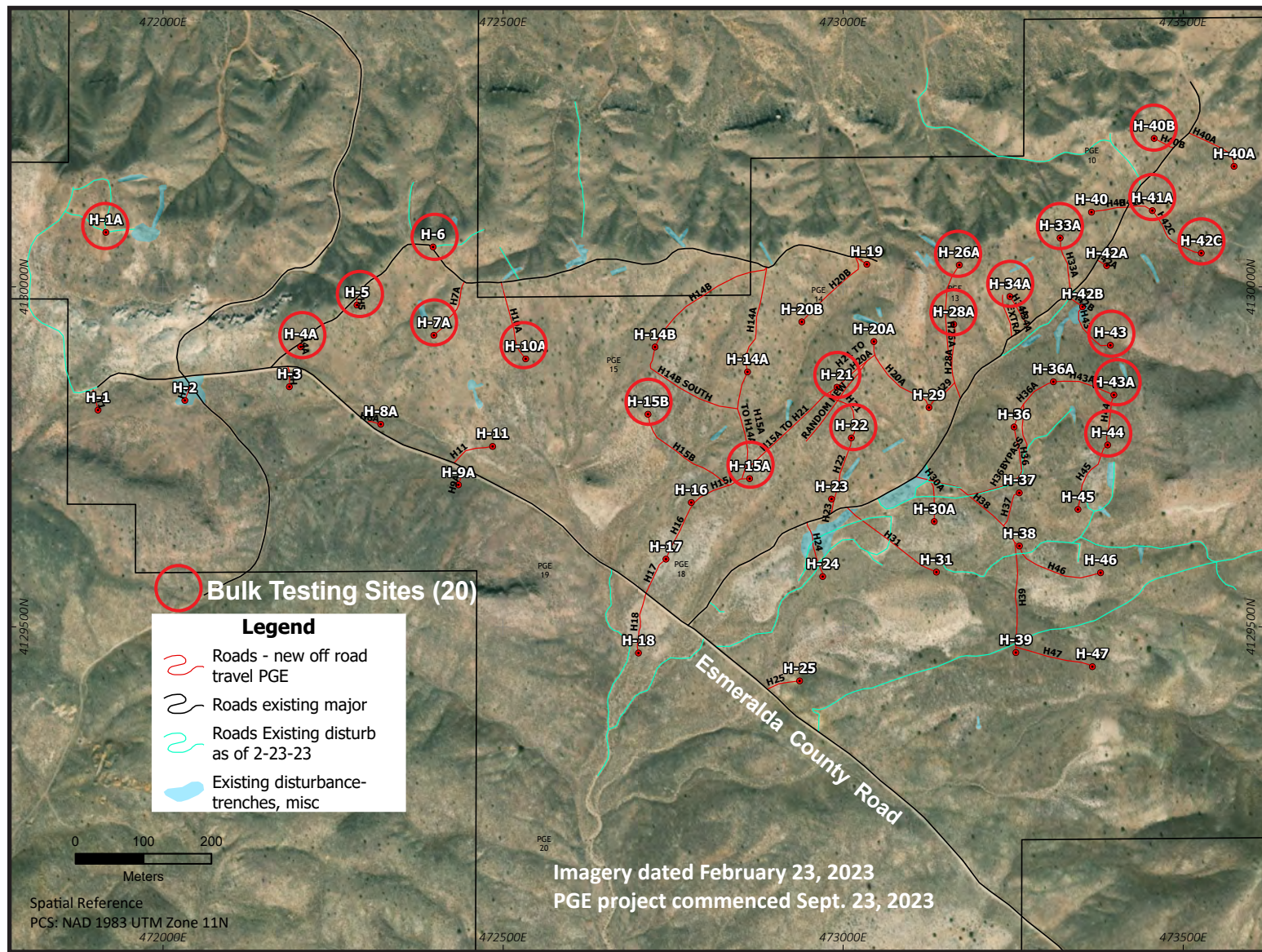
Advanced Geologic Exploration, Inc.
Scientists of the Earth™
P.O. Box 1956 • Chester • California • 96020
Tel: (530) 258-4228 • Fax: (530) 258-4339

Poverty Gulch Drilling Project

BLM Produced Overland Travel Map

Gold Point Mining District T. 7S, R. 40 & 41.5E, MDM

Esmeralda County, NV Figure 7



Advanced Geologic Exploration, Inc.
Scientists of the Earth™
 P.O. Box 1956 • Chester • California • 96020
 Tel: (530) 258-4228 • Fax: (530) 258-4339

Poverty Gulch Bulk Testing Project

Bulk Testing Location Map

Gold Point Mining District	T. 7S, R. 40 & 41.5E, MDM
Esmeralda County, NV	Figure 8



Advanced Geologic Exploration, Inc.
Scientists of the Earth™
 P.O. Box 1956 • Chester • California • 96020
 Tel: (530) 258-4228 • Fax: (530) 258-4339

Poverty Gulch Bulk Testing Project

Example of Bulk Testing Processing Site

Gold Point Mining District	T. 7S, R. 40 & 41.5E, MDM
Esmeralda County, NV	Figure 9

Appendix B

BLM MLRS Claim List

**DEPARTMENT OF THE INTERIOR
BUREAU OF LAND MANAGEMENT
MINERAL & LAND RECORDS SYSTEM
MINING CLAIMS**

MINING CLAIM GEOGRAPHIC

MTRS: 21 0070S 0412E 024										
Serial Number	Lead File Number	Legacy Serial Number	Legacy Lead File Number	Quadrant	Claim Type	Claim Name	Date of Location	Case Disposition	Next Pmt Due Date	Claimant
NV101450851	NV101450851	NMC1102774	NMC1102774	SE	LODE CLAIM	SILVER PRINCES 7	6/24/2014	ACTIVE	9/3/2024	XXXXXXXXXX
				SW	LODE CLAIM	SILVER PRINCES 7	6/24/2014	ACTIVE	9/3/2024	XXXXXXXXXX
NV101450852	NV101450852	NMC1102775	NMC1102774	SE	LODE CLAIM	SILVER PRINCESS 8	6/24/2014	ACTIVE	9/3/2024	XXXXXXXXXX
				SW	LODE CLAIM	SILVER PRINCESS 8	6/24/2014	ACTIVE	9/3/2024	XXXXXXXXXX
NV101558240	NV101558240	NMC1188139	NMC1188139	SE	PLACER CLAIM	POVERTY GULCH #5	3/29/2019	ACTIVE	9/2/2025	XXXXXXXXXX
NV101592250	NV101592250	NMC1189211	NMC1189211	NE	PLACER CLAIM	FIRST AMERICAN #1	5/21/2019	ACTIVE	9/2/2025	XXXXXXXXXX
NV101592253	NV101592253	NMC1189214	NMC1189211	NE	PLACER CLAIM	POVERTY GULCH #2	5/21/2019	ACTIVE	9/2/2025	XXXXXXXXXX
				SE	PLACER CLAIM	POVERTY GULCH #2	5/21/2019	ACTIVE	9/2/2025	XXXXXXXXXX
NV101593217	NV101593217	NMC1189215	NMC1189211	NE	PLACER CLAIM	POVERTY GULCH #3	5/21/2019	ACTIVE	9/2/2025	XXXXXXXXXX
NV101593218	NV101593218	NMC1189216	NMC1189211	SE	PLACER CLAIM	POVERTY GULCH #4	5/21/2019	ACTIVE	9/2/2025	XXXXXXXXXX
NV101767907	NV101767907	NMC1192476	NMC1192476	SE	PLACER CLAIM	POVERTY GULCH #9	9/20/2019	ACTIVE	9/2/2025	XXXXXXXXXX
NV101843031	NV101843031	NMC1108655	NMC1108655	SW	LODE CLAIM	SILVER PRINCESS 9	1/7/2015	ACTIVE	9/3/2024	XXXXXXXXXX
NV102151244	NV102151244	NMC1193319	NMC1193319	NE	PLACER CLAIM	POVERTY GULCH #6	9/2/2019	ACTIVE	9/2/2025	XXXXXXXXXX
NV102151245	NV102151245	NMC1193320	NMC1193319	NE	PLACER CLAIM	POVERTY GULCH #7	9/2/2019	ACTIVE	9/2/2025	XXXXXXXXXX
NV106384709	NV106384708			NE	PLACER CLAIM	PG #12	4/28/2024	FILED	9/2/2025	XXXXXXXXXX
					PLACER CLAIM	PG #12	4/28/2024	FILED	9/2/2025	XXXXXXXXXX
NV106384710	NV106384708			NE	PLACER CLAIM	PG #13	4/28/2024	FILED	9/2/2025	XXXXXXXXXX
					PLACER CLAIM	PG #13	4/28/2024	FILED	9/2/2025	XXXXXXXXXX
NV106384711	NV106384708			NE	PLACER CLAIM	PG #14	4/28/2024	FILED	9/2/2025	XXXXXXXXXX
					PLACER CLAIM	PG #14	4/28/2024	FILED	9/2/2025	XXXXXXXXXX
NV106384712	NV106384708			NE	PLACER CLAIM	PG #15	4/28/2024	FILED	9/2/2025	XXXXXXXXXX
				SE	PLACER CLAIM	PG #15	4/28/2024	FILED	9/2/2025	XXXXXXXXXX
					PLACER CLAIM	PG #15	4/28/2024	FILED	9/2/2025	XXXXXXXXXX
NV106384713	NV106384708			SE	PLACER CLAIM	PG #16	4/28/2024	FILED	9/2/2025	XXXXXXXXXX
					PLACER CLAIM	PG #16	4/28/2024	FILED	9/2/2025	XXXXXXXXXX

NO WARRANTY IS MADE BY BLM FOR USE
OF THE DATA FOR PURPOSES
NOT INTENDED BY BLM

**DEPARTMENT OF THE INTERIOR
BUREAU OF LAND MANAGEMENT
MINERAL & LAND RECORDS SYSTEM
MINING CLAIMS**

Serial Number	Lead File Number	Legacy Serial Number	Legacy Lead File Number	Quadrant	Claim Type	Claim Name	Date of Location	Case Disposition	Next Pmt Due Date	Claimant
NV106384714	NV106384708			SE	PLACER CLAIM	PG #17	4/28/2024	FILED	9/2/2025	XXXXXXXXXX
					PLACER CLAIM	PG #17	4/28/2024	FILED	9/2/2025	XXXXXXXXXX
NV106386124	NV106386124			NE	PLACER CLAIM	PG #11	5/28/2024	FILED	9/2/2025	XXXXXXXXXX
NV106386125	NV106386124			NE	PLACER CLAIM	PG #12	5/28/2024	FILED	9/2/2025	XXXXXXXXXX
NV106386126	NV106386124			NE	PLACER CLAIM	PG #13	5/28/2024	FILED	9/2/2025	XXXXXXXXXX
NV106386127	NV106386124			NE	PLACER CLAIM	PG #14	5/28/2024	FILED	9/2/2025	XXXXXXXXXX
NV106386128	NV106386124			NE	PLACER CLAIM	PG #15	5/28/2024	FILED	9/2/2025	XXXXXXXXXX
				SE	PLACER CLAIM	PG #15	5/28/2024	FILED	9/2/2025	XXXXXXXXXX
NV106386129	NV106386124			SE	PLACER CLAIM	PG #16	5/28/2024	FILED	9/2/2025	XXXXXXXXXX
NV106386130	NV106386124			SE	PLACER CLAIM	PG #17	5/28/2024	FILED	9/2/2025	XXXXXXXXXX

MTRS: **21 0070S
0420E 019**

Serial Number	Lead File Number	Legacy Serial Number	Legacy Lead File Number	Quadrant	Claim Type	Claim Name	Date of Location	Case Disposition	Next Pmt Due Date	Claimant
NV101558240	NV101558240	NMC1188139	NMC1188139	SW	PLACER CLAIM	POVERTY GULCH #5	3/29/2019	ACTIVE	9/2/2025	XXXXXXXXXX
NV101592250	NV101592250	NMC1189211	NMC1189211	NW	PLACER CLAIM	FIRST AMERICAN #1	5/21/2019	ACTIVE	9/2/2025	XXXXXXXXXX
NV101592251	NV101592251	NMC1189212	NMC1189211	NW	PLACER CLAIM	FIRST AMERICAN #2	5/21/2019	ACTIVE	9/2/2025	XXXXXXXXXX
				SW	PLACER CLAIM	FIRST AMERICAN #2	5/21/2019	ACTIVE	9/2/2025	XXXXXXXXXX
NV101592252	NV101592252	NMC1189213	NMC1189211	NW	PLACER CLAIM	POVERTY GULCH #1	5/21/2019	ACTIVE	9/2/2025	XXXXXXXXXX
				SW	PLACER CLAIM	POVERTY GULCH #1	5/21/2019	ACTIVE	9/2/2025	XXXXXXXXXX
NV101767907	NV101767907	NMC1192476	NMC1192476	SW	PLACER CLAIM	POVERTY GULCH #9	9/20/2019	ACTIVE	9/2/2025	XXXXXXXXXX
NV101768247	NV101768247	NMC1192481	NMC1192476	SE	PLACER CLAIM	PGE #5	9/21/2019	ACTIVE	9/2/2025	XXXXXXXXXX
NV101768249	NV101768249	NMC1192483	NMC1192476	SE	PLACER CLAIM	PGE #7	9/21/2019	ACTIVE	9/2/2025	XXXXXXXXXX
NV101770127	NV101770127	NMC1191621	NMC1191612	SW	PLACER CLAIM	POVERTY GULCH #10	9/20/2019	ACTIVE	9/2/2025	XXXXXXXXXX
NV101822321	NV101822321	NMC1193978	NMC1193978	NW	PLACER CLAIM	FIRST AMERICAN #3	9/2/2019	ACTIVE	9/2/2025	XXXXXXXXXX
NV101879541	NV101879541	NMC1186780	NMC1186778	NE	PLACER CLAIM	MORO 4	11/12/2018	ACTIVE	9/2/2025	LAGUNA MINING, LLC
NV101879542	NV101879542	NMC1186781	NMC1186778	NW	PLACER CLAIM	MORO 5	11/12/2018	ACTIVE	9/2/2025	LAGUNA MINING, LLC
NV101879543	NV101879543	NMC1186782	NMC1186778	NE	PLACER CLAIM	MORO 6	11/12/2018	ACTIVE	9/2/2025	LAGUNA MINING, LLC
NV101879544	NV101879544	NMC1186783	NMC1186778	NE	PLACER CLAIM	MORO 7	11/12/2018	ACTIVE	9/2/2025	LAGUNA MINING, LLC
NV105282499	NV105282499			NE	PLACER CLAIM	PGE #10	11/18/2021	ACTIVE	9/2/2025	XXXXXXXXXX
				SE	PLACER CLAIM	PGE #10	11/18/2021	ACTIVE	9/2/2025	XXXXXXXXXX

**NO WARRANTY IS MADE BY BLM FOR USE
OF THE DATA FOR PURPOSES
NOT INTENDED BY BLM**

**DEPARTMENT OF THE INTERIOR
BUREAU OF LAND MANAGEMENT
MINERAL & LAND RECORDS SYSTEM
MINING CLAIMS**

Serial Number	Lead File Number	Legacy Serial Number	Legacy Lead File Number	Quadrant	Claim Type	Claim Name	Date of Location	Case Disposition	Next Pmt Due Date	Claimant
NV105282499	NV105282499				PLACER CLAIM	PGE #10	11/18/2021	ACTIVE	9/2/2025	XXXXXXXXXX
NV105282501	NV105282499			SE	PLACER CLAIM	PGE #12	11/18/2021	ACTIVE	9/2/2025	XXXXXXXXXX
					PLACER CLAIM	PGE #12	11/18/2021	ACTIVE	9/2/2025	XXXXXXXXXX
NV105282502	NV105282499			SE	PLACER CLAIM	PGE #13	11/18/2021	ACTIVE	9/2/2025	XXXXXXXXXX
					PLACER CLAIM	PGE #13	11/18/2021	ACTIVE	9/2/2025	XXXXXXXXXX
NV105282503	NV105282499			SE	PLACER CLAIM	PGE #14	11/18/2021	ACTIVE	9/2/2025	XXXXXXXXXX
					PLACER CLAIM	PGE #14	11/18/2021	ACTIVE	9/2/2025	XXXXXXXXXX
NV105282504	NV105282499			SW	PLACER CLAIM	PGE #15	11/18/2021	ACTIVE	9/2/2025	XXXXXXXXXX
					PLACER CLAIM	PGE #15	11/18/2021	ACTIVE	9/2/2025	XXXXXXXXXX
NV105282505	NV105282499			SE	PLACER CLAIM	PGE #16	11/18/2021	ACTIVE	9/2/2025	XXXXXXXXXX
					PLACER CLAIM	PGE #16	11/18/2021	ACTIVE	9/2/2025	XXXXXXXXXX
NV105282506	NV105282499			SE	PLACER CLAIM	PGE #17	11/18/2021	ACTIVE	9/2/2025	XXXXXXXXXX
					PLACER CLAIM	PGE #17	11/18/2021	ACTIVE	9/2/2025	XXXXXXXXXX
NV105282507	NV105282499			SW	PLACER CLAIM	PGE #18	11/18/2021	ACTIVE	9/2/2025	XXXXXXXXXX
					PLACER CLAIM	PGE #18	11/18/2021	ACTIVE	9/2/2025	XXXXXXXXXX
NV105282508	NV105282499			SW	PLACER CLAIM	PGE #19	11/18/2021	ACTIVE	9/2/2025	XXXXXXXXXX
					PLACER CLAIM	PGE #19	11/18/2021	ACTIVE	9/2/2025	XXXXXXXXXX
NV106346042	NV106346042			SE	PLACER CLAIM	PGE #11	9/17/2023	FILED	9/2/2025	XXXXXXXXXX
					PLACER CLAIM	PGE #11	9/17/2023	FILED	9/2/2025	XXXXXXXXXX
NV106384708	NV106384708			NE	PLACER CLAIM	PGE #11	5/26/2024	FILED	9/2/2025	XXXXXXXXXX
					PLACER CLAIM	PGE #11	5/26/2024	FILED	9/2/2025	XXXXXXXXXX
NV106384755	NV106384708			NW	PLACER CLAIM	PGE #61	5/27/2024	FILED	9/2/2025	XXXXXXXXXX
					PLACER CLAIM	PGE #61	5/27/2024	FILED	9/2/2025	XXXXXXXXXX
NV106384756	NV106384708			NW	PLACER CLAIM	PGE #62	5/27/2024	FILED	9/2/2025	XXXXXXXXXX
					PLACER CLAIM	PGE #62	5/27/2024	FILED	9/2/2025	XXXXXXXXXX
NV106384757	NV106384708			NE	PLACER CLAIM	PGE #63	5/27/2024	FILED	9/2/2025	XXXXXXXXXX
					PLACER CLAIM	PGE #63	5/27/2024	FILED	9/2/2025	XXXXXXXXXX
NV106384758	NV106384708			NE	PLACER CLAIM	PGE #64	5/27/2024	FILED	9/2/2025	XXXXXXXXXX
					PLACER CLAIM	PGE #64	5/27/2024	FILED	9/2/2025	XXXXXXXXXX
NV106384759	NV106384708			NE	PLACER CLAIM	PGE #65	5/27/2024	FILED	9/2/2025	XXXXXXXXXX
					PLACER CLAIM	PGE #65	5/27/2024	FILED	9/2/2025	XXXXXXXXXX
NV106384760	NV106384708			NE	PLACER CLAIM	PGE #66	5/27/2024	FILED	9/2/2025	XXXXXXXXXX
					PLACER CLAIM	PGE #66	5/27/2024	FILED	9/2/2025	XXXXXXXXXX
NV106384761	NV106384708			NW	PLACER CLAIM	PGE #68	5/27/2024	FILED	9/2/2025	XXXXXXXXXX
				SW	PLACER CLAIM	PGE #68	5/27/2024	FILED	9/2/2025	XXXXXXXXXX
					PLACER CLAIM	PGE #68	5/27/2024	FILED	9/2/2025	XXXXXXXXXX

MTRS: 21 0070S
0420E 020

NO WARRANTY IS MADE BY BLM FOR USE
OF THE DATA FOR PURPOSES
NOT INTENDED BY BLM

**DEPARTMENT OF THE INTERIOR
BUREAU OF LAND MANAGEMENT
MINERAL & LAND RECORDS SYSTEM
MINING CLAIMS**

Serial Number	Lead File Number	Legacy Serial Number	Legacy Lead File Number	Quadrant	Claim Type	Claim Name	Date of Location	Case Disposition	Next Pmt Due Date	Claimant
NV101768248	NV101768248	NMC1192482	NMC1192476	SW	PLACER CLAIM	PGE #6	9/21/2019	ACTIVE	9/2/2025	XXXXXXXXXX
NV101768250	NV101768250	NMC1192484	NMC1192476	SW	PLACER CLAIM	PGE #8	9/21/2019	ACTIVE	9/2/2025	XXXXXXXXXX
NV101768251	NV101768251	NMC1192485	NMC1192476	SW	PLACER CLAIM	PGE #9	9/21/2019	ACTIVE	9/2/2025	XXXXXXXXXX
NV105215912	NV105215912	NMC1217719	NMC1217686	SE	LODE CLAIM	TN 36	11/15/2020	ACTIVE	9/3/2024	RRC EXPLORATION INC
NV105215914	NV105215914	NMC1217721	NMC1217686	SE	LODE CLAIM	TN 38	11/15/2020	ACTIVE	9/3/2024	RRC EXPLORATION INC
NV105215916	NV105215916	NMC1217723	NMC1217686	SE	LODE CLAIM	TN 40	11/15/2020	ACTIVE	9/3/2024	RRC EXPLORATION INC
NV105219702	NV105219702	NMC1217686	NMC1217686	SE	LODE CLAIM	TN 1	11/14/2020	ACTIVE	9/3/2024	RRC EXPLORATION INC
NV106384715	NV106384708			NW	PLACER CLAIM	PGE #21	4/29/2024	FILED	9/2/2025	XXXXXXXXXX
					PLACER CLAIM	PGE #21	4/29/2024	FILED	9/2/2025	XXXXXXXXXX
NV106384716	NV106384708			NW	PLACER CLAIM	PGE #22	4/29/2024	FILED	9/2/2025	XXXXXXXXXX
					PLACER CLAIM	PGE #22	4/29/2024	FILED	9/2/2025	XXXXXXXXXX
NV106384717	NV106384708			NW	PLACER CLAIM	PGE #23	4/29/2024	FILED	9/2/2025	XXXXXXXXXX
					PLACER CLAIM	PGE #23	4/29/2024	FILED	9/2/2025	XXXXXXXXXX
NV106384718	NV106384708			NW	PLACER CLAIM	PGE #24	4/29/2024	FILED	9/2/2025	XXXXXXXXXX
					PLACER CLAIM	PGE #24	4/29/2024	FILED	9/2/2025	XXXXXXXXXX
NV106384719	NV106384708			NE	PLACER CLAIM	PGE #25	4/29/2024	FILED	9/2/2025	XXXXXXXXXX
					PLACER CLAIM	PGE #25	4/29/2024	FILED	9/2/2025	XXXXXXXXXX
NV106384720	NV106384708			NE	PLACER CLAIM	PGE #26	4/29/2024	FILED	9/2/2025	XXXXXXXXXX
					PLACER CLAIM	PGE #26	4/29/2024	FILED	9/2/2025	XXXXXXXXXX
NV106384721	NV106384708			NW	PLACER CLAIM	PGE #27	4/29/2024	FILED	9/2/2025	XXXXXXXXXX
					PLACER CLAIM	PGE #27	4/29/2024	FILED	9/2/2025	XXXXXXXXXX
NV106384722	NV106384708			NW	PLACER CLAIM	PGE #28	4/29/2024	FILED	9/2/2025	XXXXXXXXXX
					PLACER CLAIM	PGE #28	4/29/2024	FILED	9/2/2025	XXXXXXXXXX
NV106384723	NV106384708			NW	PLACER CLAIM	PGE #29	4/29/2024	FILED	9/2/2025	XXXXXXXXXX
					PLACER CLAIM	PGE #29	4/29/2024	FILED	9/2/2025	XXXXXXXXXX
NV106384724	NV106384708			NW	PLACER CLAIM	PGE #30	4/29/2024	FILED	9/2/2025	XXXXXXXXXX
					PLACER CLAIM	PGE #30	4/29/2024	FILED	9/2/2025	XXXXXXXXXX
NV106384725	NV106384708			NE	PLACER CLAIM	PGE #31	4/29/2024	FILED	9/2/2025	XXXXXXXXXX
					PLACER CLAIM	PGE #31	4/29/2024	FILED	9/2/2025	XXXXXXXXXX
NV106384726	NV106384708			NE	PLACER CLAIM	PGE #32	4/29/2024	FILED	9/2/2025	XXXXXXXXXX
					PLACER CLAIM	PGE #32	4/29/2024	FILED	9/2/2025	XXXXXXXXXX
NV106384727	NV106384708			SW	PLACER CLAIM	PGE #33	4/29/2024	FILED	9/2/2025	XXXXXXXXXX
					PLACER CLAIM	PGE #33	4/29/2024	FILED	9/2/2025	XXXXXXXXXX
NV106384728	NV106384708			SW	PLACER CLAIM	PGE #34	4/29/2024	FILED	9/2/2025	XXXXXXXXXX
					PLACER CLAIM	PGE #34	4/29/2024	FILED	9/2/2025	XXXXXXXXXX

NO WARRANTY IS MADE BY BLM FOR USE
OF THE DATA FOR PURPOSES
NOT INTENDED BY BLM

**DEPARTMENT OF THE INTERIOR
BUREAU OF LAND MANAGEMENT
MINERAL & LAND RECORDS SYSTEM
MINING CLAIMS**

Serial Number	Lead File Number	Legacy Serial Number	Legacy Lead File Number	Quadrant	Claim Type	Claim Name	Date of Location	Case Disposition	Next Pmt Due Date	Claimant
NV106384729	NV106384708			SW	PLACER CLAIM	PGE #35	4/29/2024	FILED	9/2/2025	XXXXXXXXXX
					PLACER CLAIM	PGE #35	4/29/2024	FILED	9/2/2025	XXXXXXXXXX
NV106384730	NV106384708			SW	PLACER CLAIM	PGE #36	4/29/2024	FILED	9/2/2025	XXXXXXXXXX
					PLACER CLAIM	PGE #36	4/29/2024	FILED	9/2/2025	XXXXXXXXXX
NV106384731	NV106384708			SW	PLACER CLAIM	PGE #37	4/29/2024	FILED	9/2/2025	XXXXXXXXXX
					PLACER CLAIM	PGE #37	4/29/2024	FILED	9/2/2025	XXXXXXXXXX
NV106384732	NV106384708			SW	PLACER CLAIM	PGE #38	4/29/2024	FILED	9/2/2025	XXXXXXXXXX
					PLACER CLAIM	PGE #38	4/29/2024	FILED	9/2/2025	XXXXXXXXXX
NV106384733	NV106384708			NE	PLACER CLAIM	PGE #39	5/27/2024	FILED	9/2/2025	XXXXXXXXXX
					PLACER CLAIM	PGE #39	5/27/2024	FILED	9/2/2025	XXXXXXXXXX
NV106384734	NV106384708			NE	PLACER CLAIM	PGE #40	5/27/2024	FILED	9/2/2025	XXXXXXXXXX
					PLACER CLAIM	PGE #40	5/27/2024	FILED	9/2/2025	XXXXXXXXXX
NV106384735	NV106384708			NE	PLACER CLAIM	PGE #41	5/27/2024	FILED	9/2/2025	XXXXXXXXXX
					PLACER CLAIM	PGE #41	5/27/2024	FILED	9/2/2025	XXXXXXXXXX
NV106384736	NV106384708			NE	PLACER CLAIM	PGE #42	5/27/2024	FILED	9/2/2025	XXXXXXXXXX
					PLACER CLAIM	PGE #42	5/27/2024	FILED	9/2/2025	XXXXXXXXXX
NV106384737	NV106384708			SE	PLACER CLAIM	PGE #43	5/27/2024	FILED	9/2/2025	XXXXXXXXXX
					PLACER CLAIM	PGE #43	5/27/2024	FILED	9/2/2025	XXXXXXXXXX
NV106384738	NV106384708			SE	PLACER CLAIM	PGE #44	5/27/2024	FILED	9/2/2025	XXXXXXXXXX
					PLACER CLAIM	PGE #44	5/27/2024	FILED	9/2/2025	XXXXXXXXXX
NV106384739	NV106384708			SE	PLACER CLAIM	PGE #45	5/27/2024	FILED	9/2/2025	XXXXXXXXXX
					PLACER CLAIM	PGE #45	5/27/2024	FILED	9/2/2025	XXXXXXXXXX
NV106384740	NV106384708			SE	PLACER CLAIM	PGE #46	5/27/2024	FILED	9/2/2025	XXXXXXXXXX
					PLACER CLAIM	PGE #46	5/27/2024	FILED	9/2/2025	XXXXXXXXXX

NO WARRANTY IS MADE BY BLM FOR USE
OF THE DATA FOR PURPOSES
NOT INTENDED BY BLM

Appendix C

Bulk Testing Sites and GPS Waypoints

<u>Test Trench ID</u>	<u>East UTM NAD83z11</u>	<u>North UTM NAD83z11</u>
H-1A	471915.93	4130080.11
H-4A	472202.33	4129911.75
H-5	472285.16	4129973.21
H-6	472396.96	4130058.55
H-7A	472398.12	4129928.74
H-10A	472533.22	4129894.01
H-15A	472862.46	4129717.99
H-15B	472713.01	4129812.66
H-21	472990.75	4129852.37
H-22	473011.98	4129777.86
H-26A	473170.68	4130032.07
H-28A	473162.51	4129944.78
H-33A	473318.95	4130071.86
H-34A	473245.13	4129985.68
H-40B	473457.20	4130218.20
H-41A	473454.53	4130112.03
H-42C	473526.45	4130049.54
H-43	473392.86	4129914.06
H-43A	473397.97	4129840.97
H-45	473345.15	4129672.67

This page is intentionally left blank.